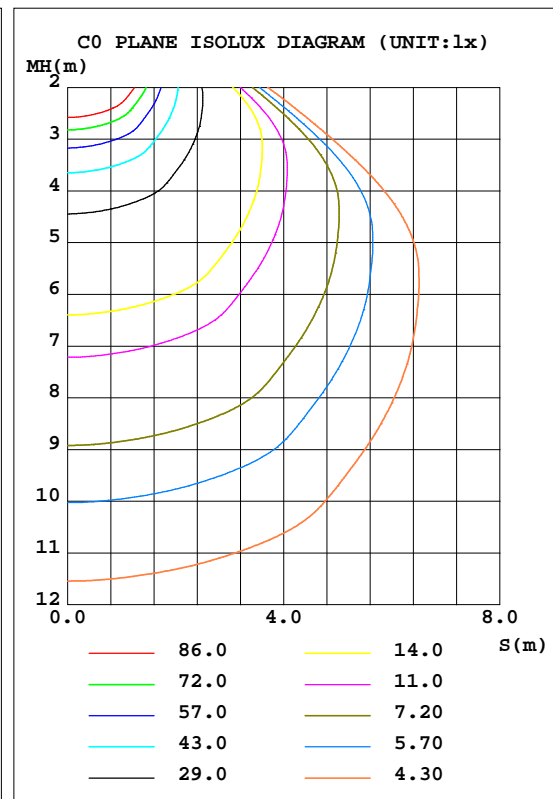
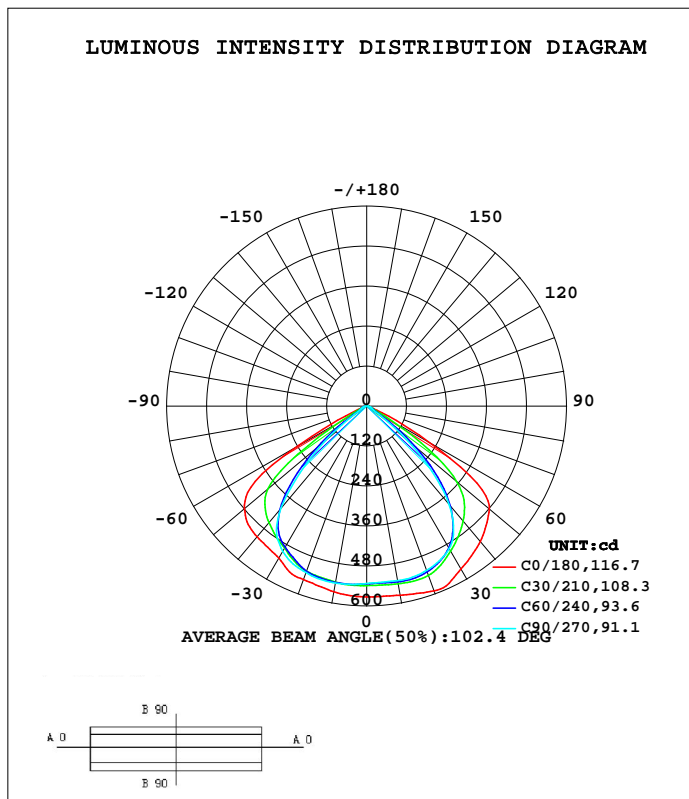


LUMINAIRE PHOTOMETRIC TEST REPORT

Test:U:0.4116V I:0A P:0W PF:0.0000 Freq:50.00Hz Lamp Flux:1230.66x1 lm		
NAME: SFL-100	TYPE:	WEIGHT:
SPEC.:	DIM.:	SERIAL No.:
MFR.:	SUR.:220*165mm	

DATA OF LAMP		PHOTOMETRIC DATA			
MODEL		I <sub>max</sub> (cd)	592.1	S/MH(C0/180)	1.40
NOMINAL POWER(W)		LOR(%)	100.0	S/MH(C90/270)	1.31
RATED VOLTAGE(V)	--	TOTAL FLUX(lm)	1230.7	η UP, DN(C0-180)	0.0,48.9
NOMINAL FLUX(lm)	1230.66	CIE CLASS	DIRECT	η UP, DN(C180-360)	0.0,51.1
LAMPS INSIDE	1	η up(%)	0.0	CIBSE SHR NOM	1.25
TEST VOLTAGE(V)	--	η down(%)	100.0	CIBSE SHR MAX	1.35



C Range: 0 - 360DEG  
 C Interval: 15.0DEG  
 Test Speed: HIGH  
 Temperature:25.3DEG  
 Operators:XIAOXIN  
 Test Date:2023-02-27

γ Range: 0 - 90DEG  
 γ Interval: 1.0DEG  
 Test System:EVERFINE GO-3000H\_V1 SYSTEM V2.00.411  
 Humidity:65.0%  
 Test Distance:9.000m [K=1.0000]  
 Remarks:

ZONAL FLUX DIAGRAM

ZONAL FLUX DIAGRAM:

$\gamma$	C0	C45	C90	C135	C180	C225	C270	C315	$\gamma$	$\Phi$ zone	$\Phi$ total	%lum,lamp
10	576.4	537.6	531.9	524.3	565.9	535.7	539.4	538.1	0- 10	51.36	51.36	4.17,4.17
20	590.4	533.1	525.0	509.3	554.3	525.7	532.2	542.4	10- 20	152.2	203.5	16.5,16.5
30	565.2	494.9	495.0	474.1	527.5	485.7	503.4	513.3	20- 30	240.6	444.2	36.1,36.1
40	530.7	421.8	385.0	404.0	512.2	424.1	400.6	445.0	30- 40	296.4	740.6	60.2,60.2
50	480.8	274.7	154.7	247.7	479.0	282.0	166.3	300.0	40- 50	284.4	1025	83.3,83.3
60	213.3	46.40	23.10	28.87	236.5	33.01	22.96	42.37	50- 60	162.2	1187	96.5,96.5
70	17.26	12.62	11.89	11.64	17.73	13.43	12.59	12.70	60- 70	32.45	1220	99.1,99.1
80	5.690	4.053	2.953	3.196	5.552	4.254	4.330	4.367	70- 80	9.205	1229	99.9,99.9
90	0.1923	0.0827	0.0268	0.0552	0.4039	0.1342	0.0641	0.1274	80- 90	1.789	1231	100,100
100									90-100			
110									100-110			
120									110-120			
130									120-130			
140									130-140			
150									140-150			
160									150-160			
170									160-170			
180									170-180			
DEG	LUMINOUS INTENSITY:cd									UNIT:lm		

Conical surface Flux(90deg): 890.32 lm

%lum = 72.3%  
 %lamp = 72.3%

Conical surface Flux(120deg): 1187.2 lm

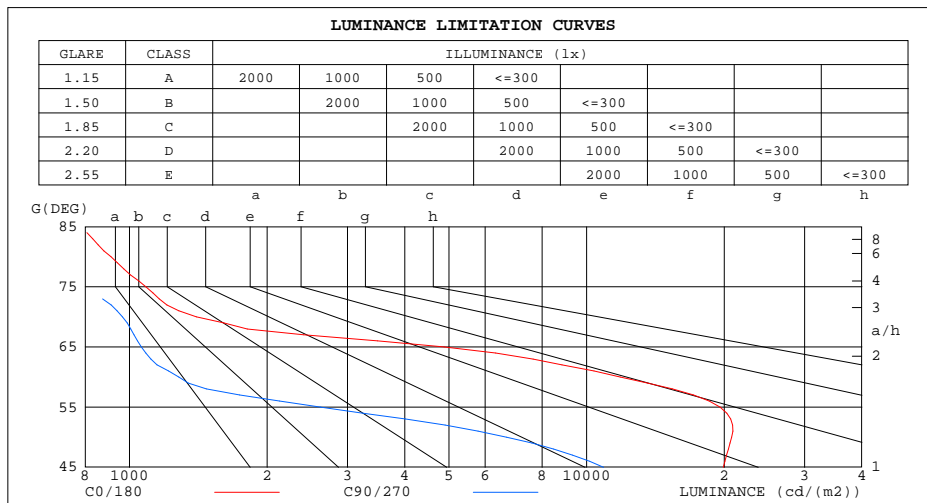
%lum = 96.5%  
 %lamp = 96.5%

C Range: 0 - 360DEG  
 C Interval: 15.0DEG  
 Test Speed: HIGH  
 Temperature:25.3DEG  
 Operators:XIAOXIN  
 Test Date:2023-02-27

$\gamma$  Range: 0 - 90DEG  
 $\gamma$  Interval: 1.0DEG  
 Test System:EVERFINE GO-3000H\_V1 SYSTEM V2.00.411  
 Humidity:65.0%  
 Test Distance:9.000m [K=1.0000]  
 Remarks:

LUMINANCE LIMITATION CURVES

Test:U:0.4116V I:0A P:0W PF:0.0000 Freq:50.00Hz Lamp Flux:1230.66x1 lm		
NAME: SFL-100	TYPE:	WEIGHT:
SPEC.:	DIM.:	SERIAL No.:
MFR.:	SUR.:220*165mm	



LUMINANCE cd/(m2)		
G(DEG)	C0/180	C90/270
85	777	136
80	910	472
75	1086	693
70	1402	965
65	4878	1061
60	11848	1283
55	19582	2621
50	20779	6684
45	19909	10901

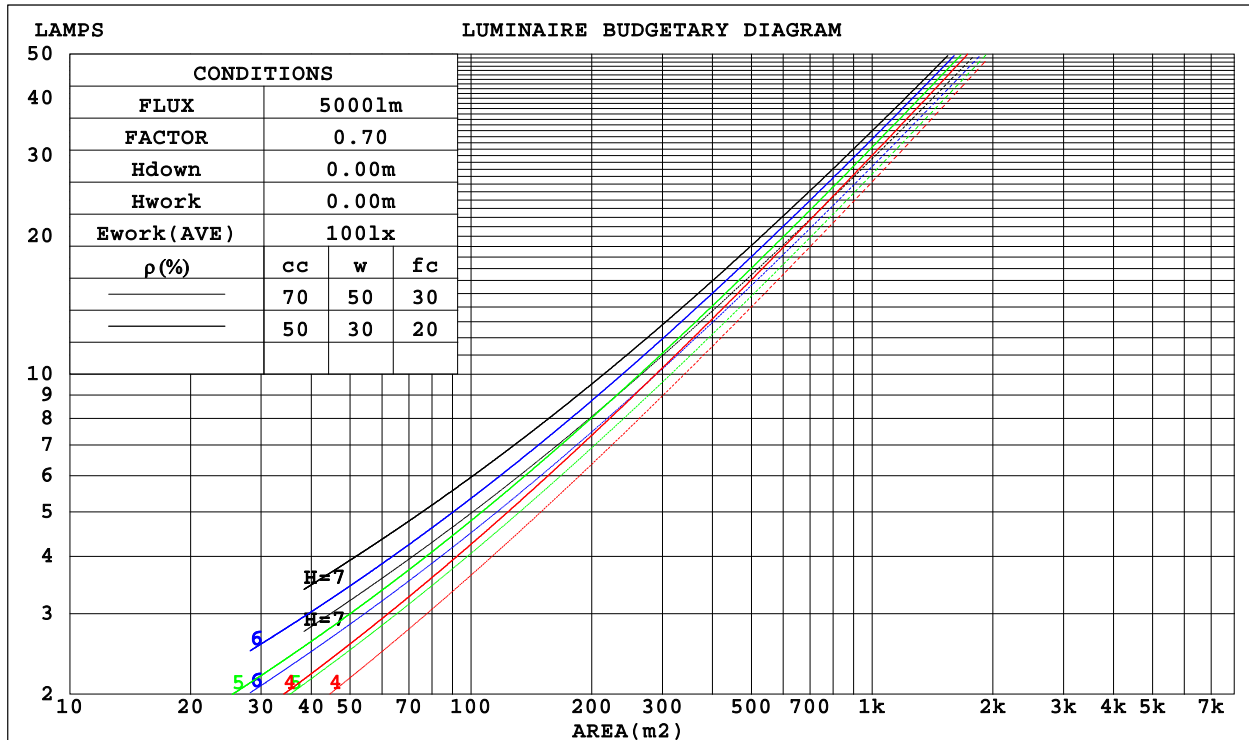
C Range: 0 - 360DEG  
 C Interval: 15.0DEG  
 Test Speed: HIGH  
 Temperature:25.3DEG  
 Operators:XIAOXIN  
 Test Date:2023-02-27

γ Range: 0 - 90DEG  
 γ Interval: 1.0DEG  
 Test System:EVERFINE GO-3000H\_V1 SYSTEM V2.00.411  
 Humidity:65.0%  
 Test Distance:9.000m [K=1.0000]  
 Remarks:

CU AND LUMINAIRE BUDGETARY ESTIMATE DIAGRAM

Test:U:0.4116V I:0A P:0W PF:0.0000 Freq:50.00Hz Lamp Flux:1230.66x1 lm		
NAME: SFL-100	TYPE:	WEIGHT:
SPEC.:	DIM.:	SERIAL No.:
MFR.:	SUR.:220*165mm	

$\rho_{cc}$	80%			70%			50%			30%			10%			0
$\rho_w$	50%	30%	10%	50%	30%	10%	50%	30%	10%	50%	30%	10%	50%	30%	10%	0
$\rho_{fc}$	20%			20%			20%			20%			20%			0
RCR	RCR:Room Cavity Ratio						Coefficients of Utilization(CU)									
0.0	1.19	1.19	1.19	1.16	1.16	1.16	1.11	1.11	1.11	1.06	1.06	1.06	1.02	1.02	1.02	1.00
1.0	1.08	1.05	1.02	1.06	1.03	1.00	1.02	.99	.97	.98	.96	.94	.94	.93	.91	.89
2.0	.97	.92	.87	.95	.90	.86	.92	.88	.84	.89	.85	.82	.86	.83	.81	.79
3.0	.87	.81	.75	.86	.80	.75	.83	.78	.73	.80	.76	.72	.78	.74	.71	.69
4.0	.79	.71	.66	.77	.71	.65	.75	.69	.64	.73	.68	.64	.71	.66	.63	.61
5.0	.71	.63	.58	.70	.63	.57	.68	.62	.57	.66	.61	.56	.65	.60	.56	.54
6.0	.65	.57	.51	.64	.56	.51	.62	.55	.51	.60	.55	.50	.59	.54	.50	.48
7.0	.59	.51	.46	.58	.51	.45	.57	.50	.45	.55	.49	.45	.54	.49	.45	.43
8.0	.54	.46	.41	.53	.46	.41	.52	.45	.41	.51	.45	.40	.50	.44	.40	.38
9.0	.50	.42	.37	.49	.42	.37	.48	.41	.37	.47	.41	.37	.46	.41	.36	.35
10.0	.46	.39	.34	.45	.38	.34	.44	.38	.33	.44	.38	.33	.43	.37	.33	.32



C Range: 0 - 360DEG  
 C Interval: 15.0DEG  
 Test Speed: HIGH  
 Temperature:25.3DEG  
 Operators:XIAOXIN  
 Test Date:2023-02-27

$\gamma$  Range: 0 - 90DEG  
 $\gamma$  Interval: 1.0DEG  
 Test System:EVERFINE GO-3000H\_V1 SYSTEM V2.00.411  
 Humidity:65.0%  
 Test Distance:9.000m [K=1.0000]  
 Remarks:

WEC AND CCEC

Test:U:0.4116V I:0A P:0W PF:0.0000 Freq:50.00Hz Lamp Flux:1230.66x1 lm		
NAME: SFL-100	TYPE:	WEIGHT:
SPEC.:	DIM.:	SERIAL No.:
MFR.:	SUR.:220*165mm	

pcc	80%			70%			50%			30%			10%			0
pw	50%	30%	10%	50%	30%	10%	50%	30%	10%	50%	30%	10%	50%	30%	10%	0
pfc	20%			20%			20%			20%			20%			0
RCR	RCR:Room Cavity Ratio						Wall Exitance Coefficients(WEC)									
0.0																
1.0	.232	.132	.042	.225	.128	.041	.212	.122	.039	.200	.115	.037	.189	.110	.035	
2.0	.228	.125	.038	.222	.122	.038	.211	.117	.036	.201	.113	.035	.191	.108	.034	
3.0	.219	.117	.035	.214	.114	.034	.204	.111	.034	.195	.107	.033	.187	.103	.032	
4.0	.208	.108	.032	.204	.107	.032	.195	.104	.031	.187	.101	.030	.180	.098	.030	
5.0	.198	.101	.029	.194	.099	.029	.186	.097	.029	.179	.094	.028	.172	.092	.028	
6.0	.187	.094	.027	.184	.093	.027	.177	.091	.026	.170	.089	.026	.165	.087	.026	
7.0	.177	.088	.025	.174	.087	.025	.168	.085	.024	.162	.083	.024	.157	.082	.024	
8.0	.168	.082	.023	.165	.081	.023	.160	.080	.023	.154	.078	.023	.150	.077	.022	
9.0	.159	.077	.022	.157	.076	.021	.152	.075	.021	.147	.074	.021	.143	.072	.021	
10.0	.151	.073	.020	.149	.072	.020	.144	.071	.020	.140	.070	.020	.136	.069	.020	

pcc	80%			70%			50%			30%			10%			0
pw	50%	30%	10%	50%	30%	10%	50%	30%	10%	50%	30%	10%	50%	30%	10%	0
pfc	20%			20%			20%			20%			20%			0
RCR	RCR:Room Cavity Ratio						Ceiling Cavity Exitance Coefficients(CCEC)									
0.0	.190	.190	.190	.163	.163	.163	.111	.111	.111	.064	.064	.064	.020	.020	.020	
1.0	.175	.157	.141	.150	.135	.121	.102	.093	.084	.059	.054	.049	.019	.017	.016	
2.0	.164	.132	.106	.140	.114	.091	.096	.079	.064	.055	.046	.037	.018	.015	.012	
3.0	.155	.114	.082	.133	.098	.071	.091	.068	.050	.053	.040	.029	.017	.013	.010	
4.0	.147	.100	.064	.126	.086	.056	.087	.060	.039	.050	.035	.023	.016	.011	.008	
5.0	.140	.089	.052	.120	.077	.045	.083	.054	.032	.048	.032	.019	.015	.010	.006	
6.0	.133	.081	.043	.115	.070	.037	.079	.049	.026	.046	.029	.016	.015	.009	.005	
7.0	.127	.074	.036	.109	.064	.031	.076	.045	.022	.044	.026	.013	.014	.009	.004	
8.0	.122	.068	.031	.105	.059	.027	.072	.041	.019	.042	.024	.011	.014	.008	.004	
9.0	.116	.063	.027	.100	.055	.023	.069	.038	.017	.040	.023	.010	.013	.007	.003	
10.0	.111	.059	.024	.096	.051	.021	.067	.036	.015	.039	.021	.009	.013	.007	.003	

C Range: 0 - 360DEG  
 C Interval: 15.0DEG  
 Test Speed: HIGH  
 Temperature:25.3DEG  
 Operators:XIAOXIN  
 Test Date:2023-02-27

γ Range: 0 - 90DEG  
 γ Interval: 1.0DEG  
 Test System:EVERFINE GO-3000H\_V1 SYSTEM V2.00.411  
 Humidity:65.0%  
 Test Distance:9.000m [K=1.0000]  
 Remarks:

UGR(Unified Glare Rating) Table

Test:U:0.4116V I:0A P:0W PF:0.0000 Freq:50.00Hz Lamp Flux:1230.66x1 lm										
NAME: SFL-100					TYPE:			WEIGHT:		
SPEC.:					DIM.:			SERIAL No.:		
MFR.:					SUR.:220*165mm					
ceiling/cavity	0.7	0.7	0.5	0.5	0.3	0.7	0.7	0.5	0.5	0.3
walls	0.5	0.3	0.5	0.3	0.3	0.5	0.3	0.5	0.3	0.3
working plane	0.2	0.2	0.2	0.2	0.2	0.2	0.2	0.2	0.2	0.2
Room dimensions	Viewed crosswise					Viewed endwise				
x = 2H y = 2H	22.3	23.6	22.6	23.8	24.0	17.6	18.9	17.8	19.1	19.3
3H	22.2	23.4	22.5	23.6	23.8	17.5	18.7	17.7	18.9	19.1
4H	22.1	23.2	22.4	23.5	23.7	17.4	18.5	17.7	18.8	19.0
6H	22.0	23.1	22.3	23.3	23.6	17.3	18.4	17.6	18.6	18.9
8H	22.0	23.0	22.3	23.3	23.5	17.3	18.3	17.6	18.5	18.8
12H	21.9	22.9	22.3	23.2	23.5	17.2	18.2	17.6	18.5	18.8
4H 2H	22.1	23.2	22.4	23.4	23.7	17.6	18.8	17.9	19.0	19.3
3H	22.0	22.9	22.3	23.2	23.5	17.6	18.5	17.9	18.8	19.1
4H	21.9	22.7	22.2	23.1	23.4	17.5	18.4	17.9	18.7	19.0
6H	21.8	22.6	22.2	22.9	23.3	17.4	18.2	17.8	18.5	18.9
8H	21.8	22.5	22.2	22.8	23.2	17.4	18.1	17.8	18.5	18.8
12H	21.7	22.4	22.1	22.7	23.1	17.4	18.0	17.8	18.4	18.8
8H 4H	21.7	22.5	22.2	22.8	23.2	17.4	18.1	17.8	18.5	18.8
6H	21.7	22.3	22.1	22.7	23.1	17.4	17.9	17.8	18.3	18.7
8H	21.6	22.2	22.1	22.6	23.0	17.3	17.8	17.8	18.2	18.7
12H	21.6	22.0	22.1	22.5	23.0	17.3	17.7	17.8	18.2	18.6
12H 4H	21.7	22.3	22.1	22.7	23.1	17.4	18.0	17.8	18.4	18.8
6H	21.6	22.1	22.1	22.6	23.0	17.3	17.8	17.8	18.2	18.7
8H	21.6	22.0	22.1	22.5	23.0	17.3	17.7	17.8	18.2	18.6
Variations with the observer position at spacings:										
S = 1.0H	+ 0.5 / - 0.6					+ 2.2 / - 6.7				
1.5H	+ 2.1 / - 2.3					+ 1.4 / - 3.9				
2.0H	+ 3.4 / -10.5					+ 4.3 / - 7.2				

CIE Pub.117, 1231 lm Total Lamp Luminous Flux Corrected (8log(F/F0) = 0.7)  
 Area: 0.036 m2

C Range: 0 - 360DEG  
 C Interval: 15.0DEG  
 Test Speed: HIGH  
 Temperature:25.3DEG  
 Operators:XIAOXIN  
 Test Date:2023-02-27

γ Range: 0 - 90DEG  
 γ Interval: 1.0DEG  
 Test System:EVERFINE GO-3000H\_V1 SYSTEM V2.00.411  
 Humidity:65.0%  
 Test Distance:9.000m [K=1.0000]  
 Remarks:

UTILIZATION FACTORS TABLE

Test:U:0.4116V I:0A P:0W PF:0.0000 Freq:50.00Hz Lamp Flux:1230.66x1 lm		
NAME: SFL-100	TYPE:	WEIGHT:
SPEC.:	DIM.:	SERIAL No.:
MFR.:	SUR.:220*165mm	

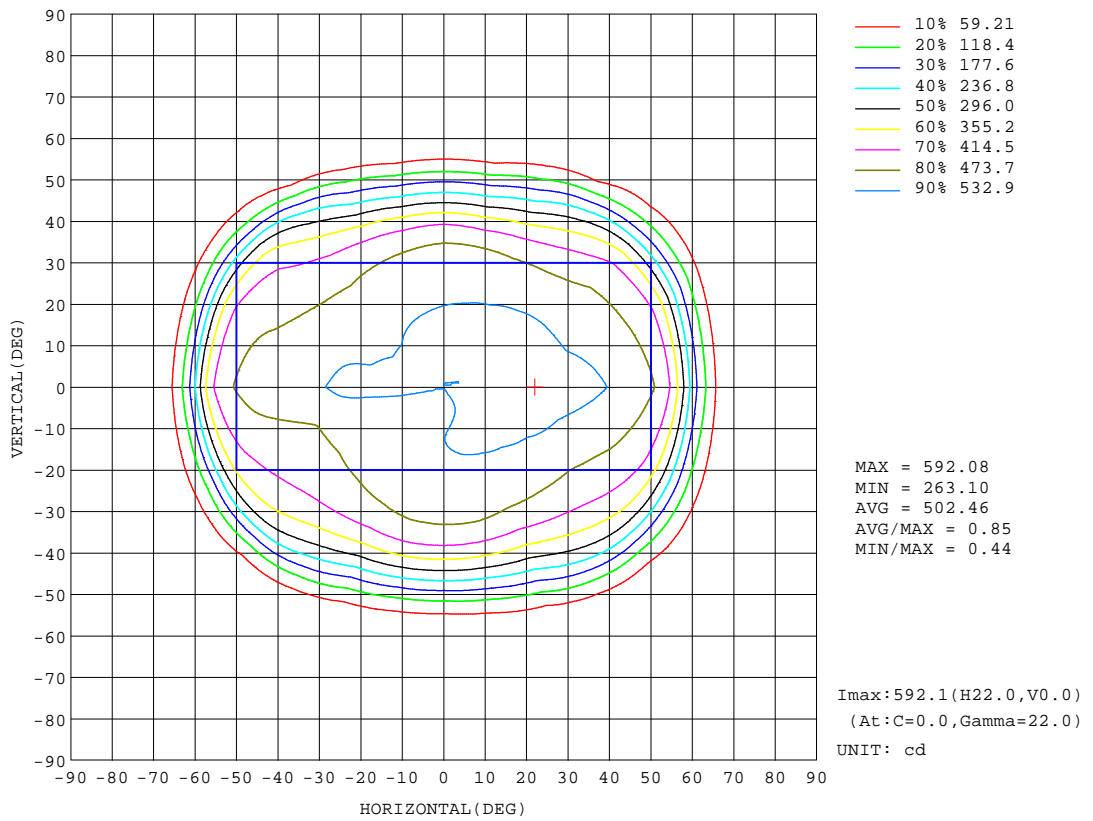
REFLECTANCE										
Ceiling	0.8	0.8	0.8	0.7	0.7	0.7	0.5	0.5	0.5	0
Walls	0.7	0.5	0.3	0.7	0.5	0.3	0.7	0.5	0.3	0
Working plane	0.2	0.2	0.2	0.2	0.2	0.2	0.2	0.2	0.2	0
ROOM INDEX	UTILIZATION FACTORS(PERCENT) k(RI) x RCR = 5									
k = 0.60	66	55	49	65	55	49	64	55	49	43
0.80	76	67	60	76	66	60	74	66	60	54
1.00	85	76	70	84	76	70	82	77	70	64
1.25	92	84	78	91	83	78	88	82	77	71
1.50	96	89	84	95	88	83	92	86	82	76
2.00	102	96	91	100	95	90	97	92	89	82
2.50	105	99	94	103	98	93	99	95	92	85
3.00	107	102	98	105	101	97	102	98	95	87
4.00	110	106	102	108	104	101	104	101	98	90
5.00	111	108	105	109	106	103	105	102	100	92
ROOM INDEX	UF(total)									Direct
According to DIN EN 13032-2 2004			Suspended				SHRNOM = 1.25			

C Range: 0 - 360DEG  
 C Interval: 15.0DEG  
 Test Speed: HIGH  
 Temperature:25.3DEG  
 Operators:XIAOXIN  
 Test Date:2023-02-27

γ Range: 0 - 90DEG  
 γ Interval: 1.0DEG  
 Test System:EVERFINE GO-3000H\_V1 SYSTEM V2.00.411  
 Humidity:65.0%  
 Test Distance:9.000m [K=1.0000]  
 Remarks:

ISOCANDELA DIAGRAM

Test:U:0.4116V I:0A P:0W PF:0.0000 Freq:50.00Hz Lamp Flux:1230.66x1 lm		
NAME: SFL-100	TYPE:	WEIGHT:
SPEC.:	DIM.:	SERIAL No.:
MFR.:	SUR.:220*165mm	



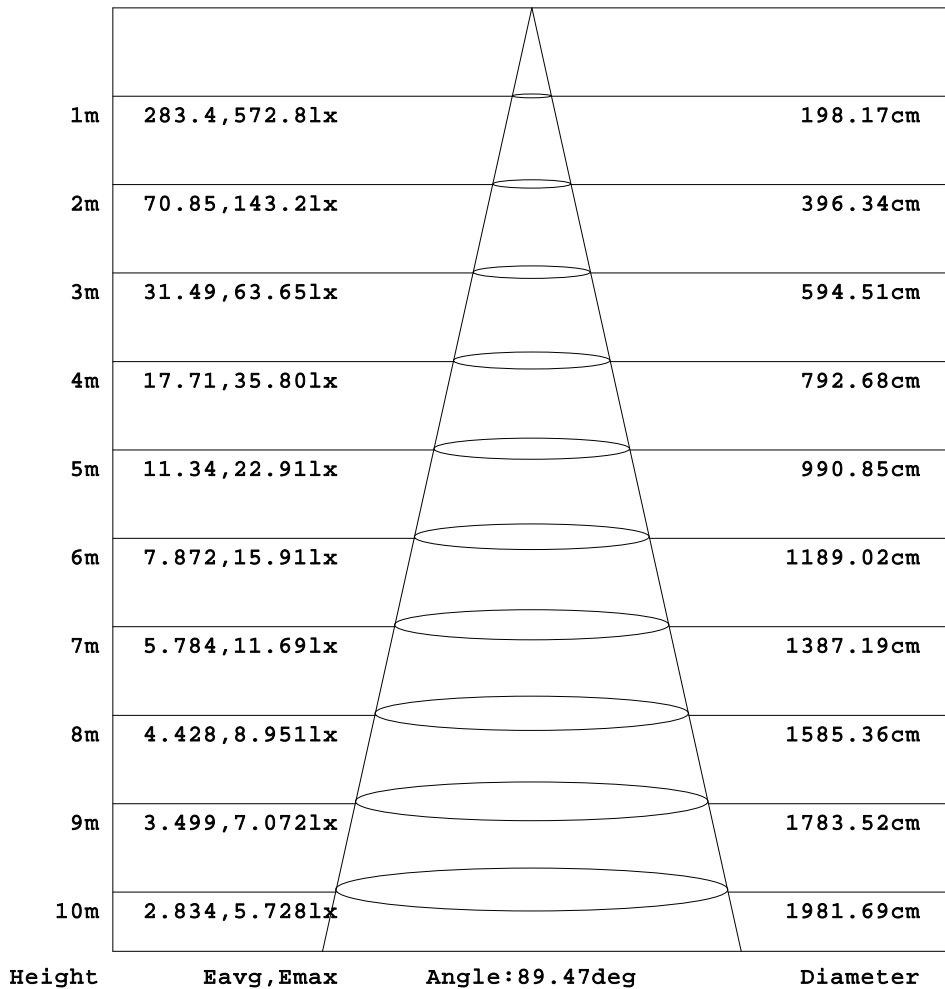
C Range: 0 - 360DEG  
 C Interval: 15.0DEG  
 Test Speed: HIGH  
 Temperature:25.3DEG  
 Operators:XIAOXIN  
 Test Date:2023-02-27

γ Range: 0 - 90DEG  
 γ Interval: 1.0DEG  
 Test System:EVERFINE GO-3000H\_V1 SYSTEM V2.00.411  
 Humidity:65.0%  
 Test Distance:9.000m [K=1.0000]  
 Remarks:

AAI Figure

Test:U:0.4116V I:0A P:0W PF:0.0000 Freq:50.00Hz Lamp Flux:1230.66x1 lm		
NAME: SFL-100	TYPE:	WEIGHT:
SPEC.:	DIM.:	SERIAL No.:
MFR.:	SUR.:220*165mm	

Flux out:890.3 lm



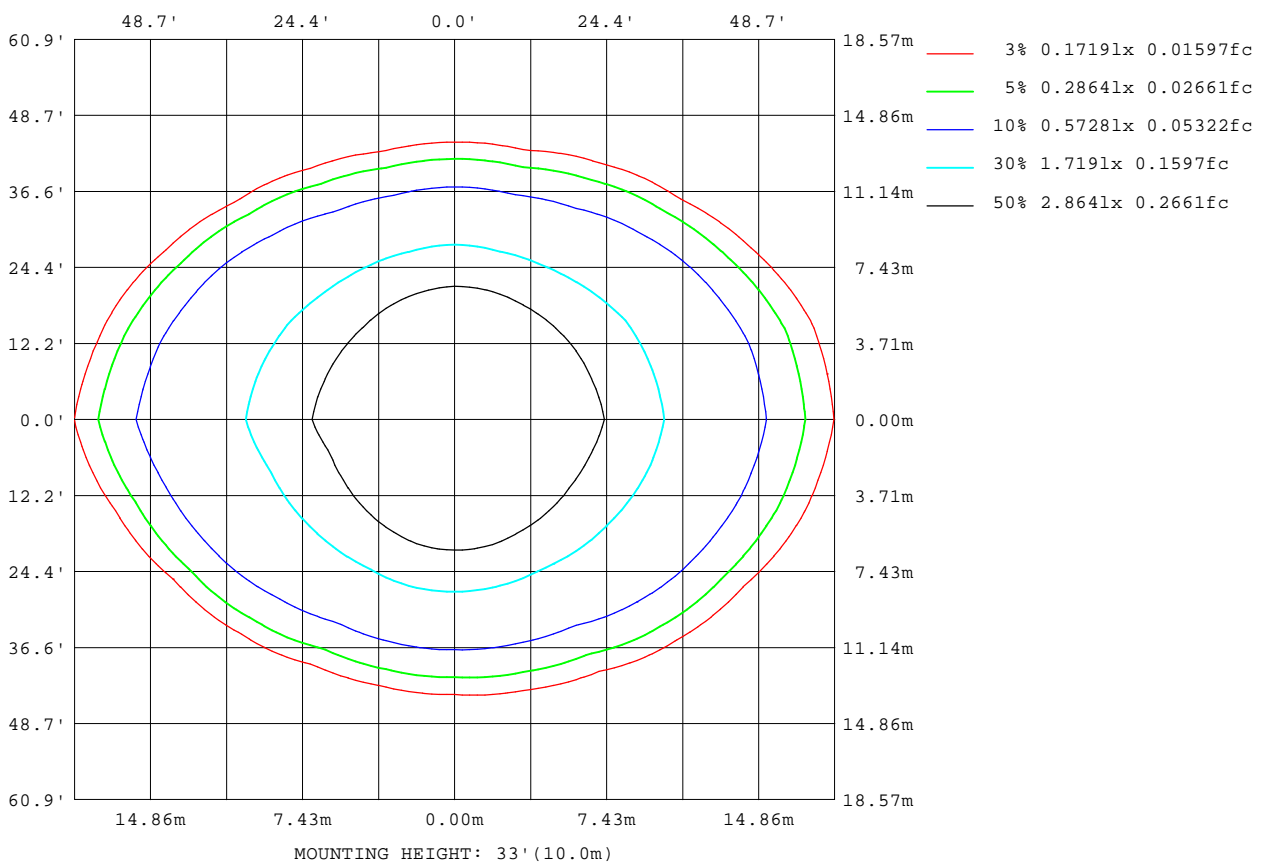
Note:The Curves indicate the illuminated area and the average illumination when the luminaire is at different distance.

C Range: 0 - 360DEG  
 C Interval: 15.0DEG  
 Test Speed: HIGH  
 Temperature:25.3DEG  
 Operators:XIAOXIN  
 Test Date:2023-02-27

γ Range: 0 - 90DEG  
 γ Interval: 1.0DEG  
 Test System:EVERFINE GO-3000H\_V1 SYSTEM V2.00.411  
 Humidity:65.0%  
 Test Distance:9.000m [K=1.0000]  
 Remarks:

ISOLUX DIAGRAM

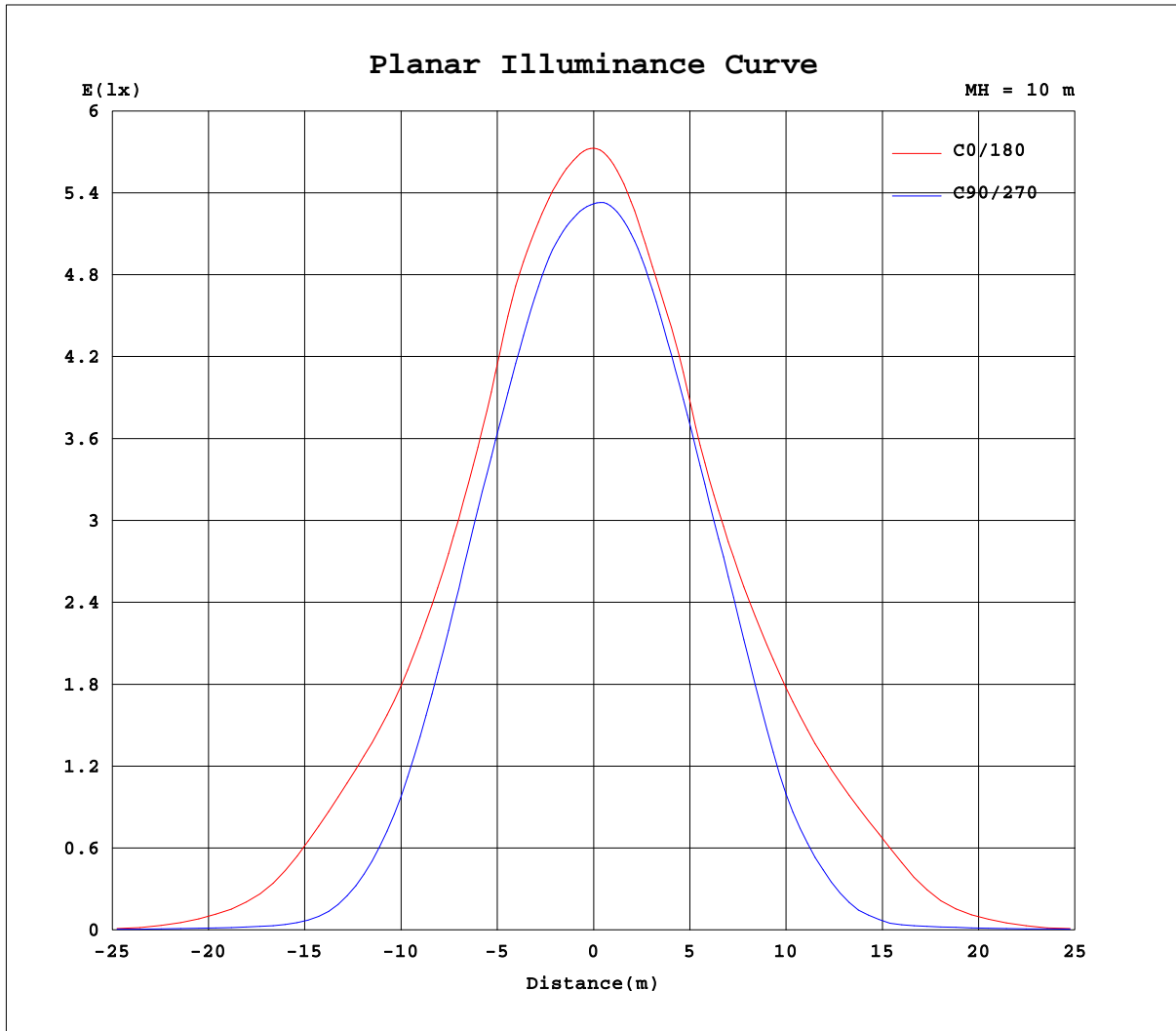
Test:U:0.4116V I:0A P:0W PF:0.0000 Freq:50.00Hz Lamp Flux:1230.66x1 lm		
NAME: SFL-100	TYPE:	WEIGHT:
SPEC.:	DIM.:	SERIAL No.:
MFR.:	SUR.:220*165mm	



C Range: 0 - 360DEG  
 C Interval: 15.0DEG  
 Test Speed: HIGH  
 Temperature:25.3DEG  
 Operators:XIAOXIN  
 Test Date:2023-02-27

γ Range: 0 - 90DEG  
 γ Interval: 1.0DEG  
 Test System:EVERFINE GO-3000H\_V1 SYSTEM V2.00.411  
 Humidity:65.0%  
 Test Distance:9.000m [K=1.0000]  
 Remarks:

### Planar Illuminance Curve



C Range: 0 - 360DEG  
C Interval: 15.0DEG  
Test Speed: HIGH  
Temperature: 25.3DEG  
Operators: XIAOXIN  
Test Date: 2023-02-27

$\gamma$  Range: 0 - 90DEG  
 $\gamma$  Interval: 1.0DEG  
Test System: EVERFINE GO-3000H\_V1 SYSTEM V2.00.411  
Humidity: 65.0%  
Test Distance: 9.000m [K=1.0000]  
Remarks:



