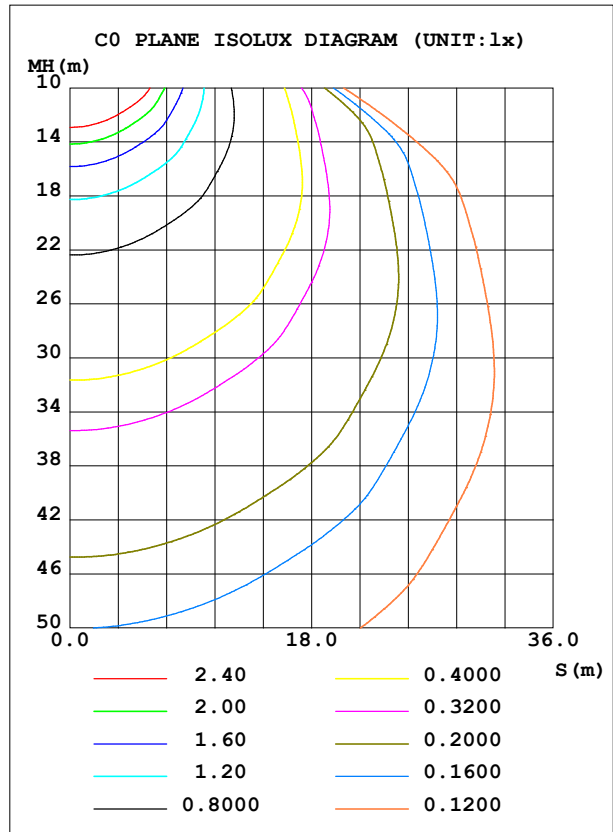
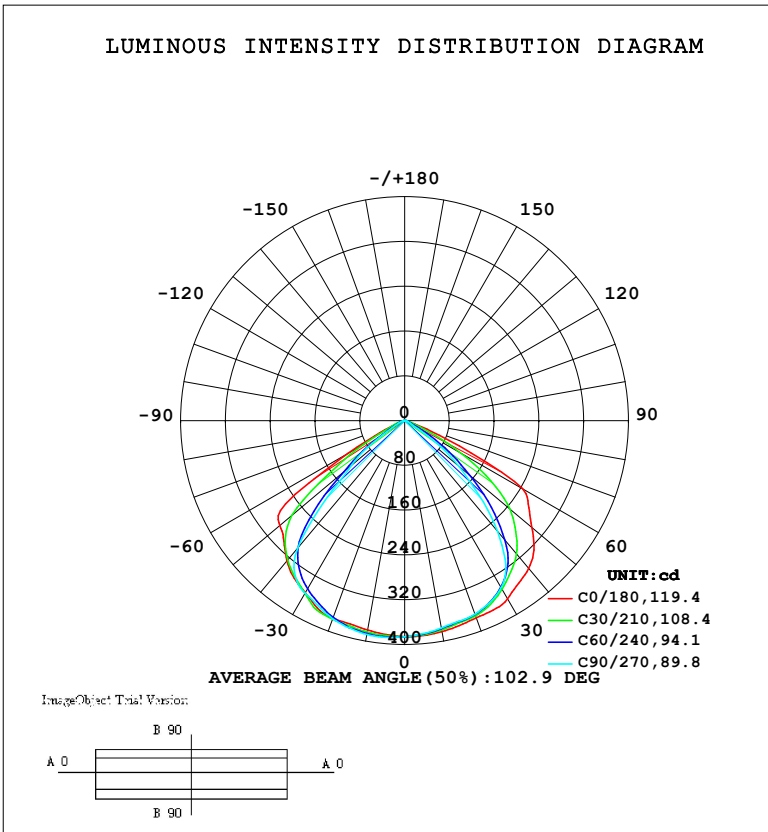


LUMINAIRE PHOTOMETRIC TEST REPORT

Test:U:0V I:0A P:0W PF:0.0000 Freq:0Hz		
Lamp Flux:886.79x1 lm		
NAME:	TYPE:	WEIGHT:
SPEC.:	DIM.:	SERIAL No.:
MFR.:	SUR.:	Shielding Angle:

DATA OF LAMP		PHOTOMETRIC DATA			
MODEL	SFL-50	I _{max} (cd)	389.0	S/MH (C0/180)	1.38
NOMINAL POWER (W)	6	LOR (%)	100.0	S/MH (C90/270)	1.31
RATED VOLTAGE (V)	220	TOTAL FLUX (lm)	886.79	η UP, DN (C0-180)	0.0,48.7
NOMINAL FLUX (lm)	886.79	CIE CLASS	DIRECT	η UP, DN (C180-360)	0.0,51.3
LAMPS INSIDE	1	η up (%)	0.0	CIBSE SHR NOM	1.25
TEST VOLTAGE (V)	220	η down (%)	100.0	CIBSE SHR MAX	1.35



C Range: 0 - 360DEG
 C Interval: 15.0DEG
 Test Speed: HIGH
 Temperature: 25.3°C
 Operators:
 Test Date: 2023-02-26

γ Range: 0 - 90DEG
 γ Interval: 1.0DEG
 Test System: EVERFINE GO-2000B_V1 SYSTEM V2.00.458
 Humidity: 65.0%
 Test Distance: 9.420m [K=1.0000]
 Remarks:

ZONAL FLUX DIAGRAM

ZONAL FLUX DIAGRAM:

γ	C0	C45	C90	C135	C180	C225	C270	C315	γ	Φ zone	Φ total	%lum,lamp
10	382.8	379.3	376.1	376.5	379.8	384.8	387.9	386.6	0- 10	36.64	36.64	4.13,4.13
20	374.7	370.2	367.7	364.8	375.5	373.8	376.4	376.9	10- 20	106.8	143.5	16.2,16.2
30	367.5	345.2	345.0	331.3	355.0	348.3	355.8	356.4	20- 30	167.7	311.2	35.1,35.1
40	344.8	297.2	257.9	272.4	327.2	310.3	297.2	321.5	30- 40	206.8	518.0	58.4,58.4
50	296.8	195.8	125.1	160.1	291.2	193.7	123.4	222.8	40- 50	195.9	714.0	80.5,80.5
60	243.2	73.67	21.74	42.07	117.0	48.18	26.76	82.51	50- 60	127.6	841.5	94.9,94.9
70	32.03	11.80	6.180	7.827	7.474	11.09	7.883	15.55	60- 70	37.48	879.0	99.1,99.1
80	3.358	3.165	1.270	1.366	1.898	1.726	1.819	3.685	70- 80	6.847	885.9	99.9,99.9
90	0.0244	0.0572	0	0	0.0122	0	0	0.0127	80- 90	0.9211	886.8	100,100
100									90-100			
110									100-110			
120									110-120			
130									120-130			
140									130-140			
150									140-150			
160									150-160			
170									160-170			
180									170-180			
DEG	LUMINOUS INTENSITY:cd									UNIT:lm		

Conical surface Flux(90deg): 621.8 lm

%lum = 70.1%

%lamp = 70.1%

Conical surface Flux(130deg): 867.96 lm

%lum = 97.9%

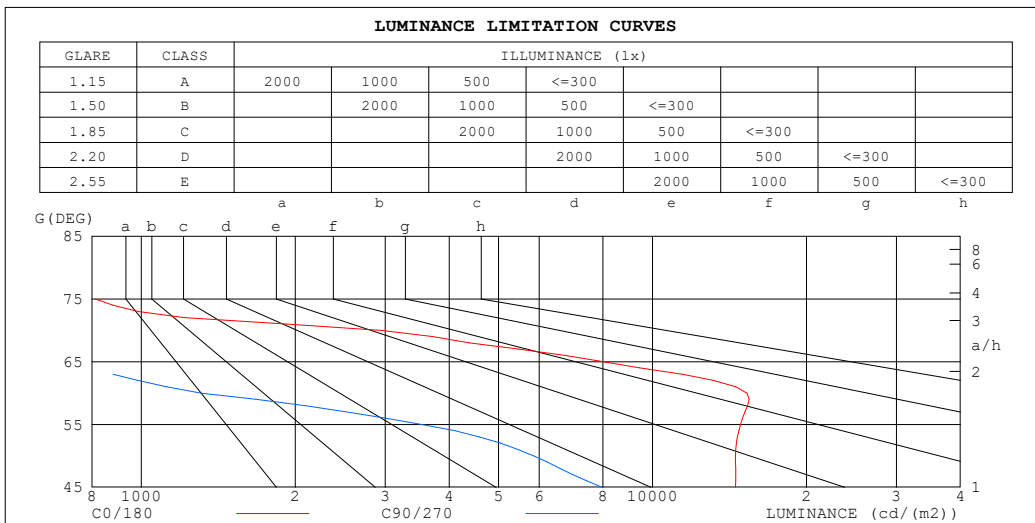
%lamp = 97.9%

C Range: 0 - 360DEG
 C Interval: 15.0DEG
 Test Speed: HIGH
 Temperature:25.3°C
 Operators:
 Test Date:2023-02-26

γ Range: 0 - 90DEG
 γ Interval: 1.0DEG
 Test System:EVERFINE GO-2000B_V1 SYSTEM V2.00.458
 Humidity:65.0%
 Test Distance:9.420m [K=1.0000]
 Remarks:

LUMINANCE LIMITATION CURVES

Test:U:0V I:0A P:0W PF:0.0000 Freq:0Hz		
Lamp Flux:886.79x1 lm		
NAME:	TYPE:	WEIGHT:
SPEC.:	DIM.:	SERIAL No.:
MFR.:	SUR.:	Shielding Angle:



LUMINANCE cd/(m2)		
G (DEG)	C0/180	C90/270
85	422	56
80	608	220
75	813	346
70	2946	544
65	8033	730
60	15299	1309
55	14869	3542
50	14527	5855
45	14532	7973

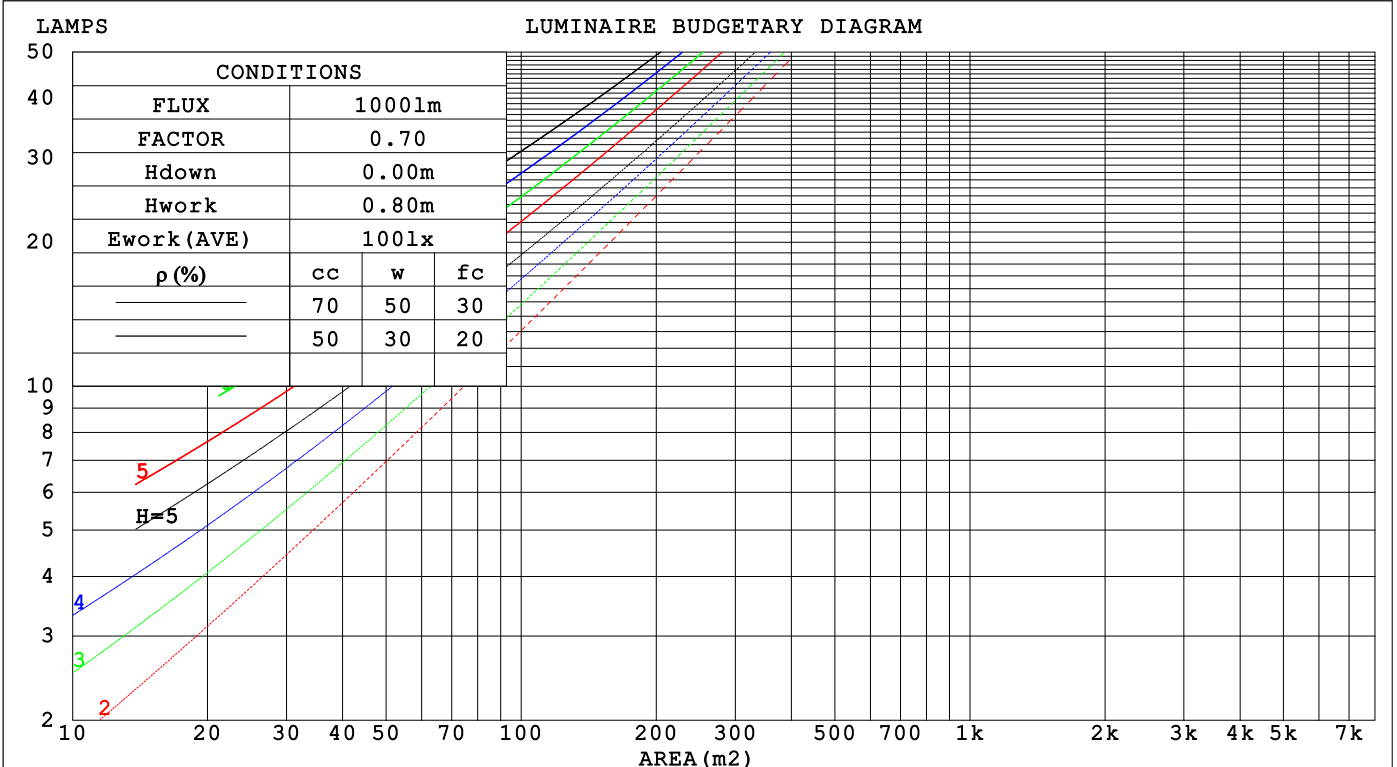
C Range: 0 - 360DEG
 C Interval: 15.0DEG
 Test Speed: HIGH
 Temperature:25.3°C
 Operators:
 Test Date:2023-02-26

γ Range: 0 - 90DEG
 γ Interval: 1.0DEG
 Test System:EVERFINE GO-2000B_V1 SYSTEM V2.00.458
 Humidity:65.0%
 Test Distance:9.420m [K=1.0000]
 Remarks:

CU AND LUMINAIRE BUDGETARY ESTIMATE DIAGRAM

Test:U:0V I:0A P:0W PF:0.0000 Freq:0Hz		
Lamp Flux:886.79x1 lm		
NAME:	TYPE:	WEIGHT:
SPEC.:	DIM.:	SERIAL No.:
MFR.:	SUR.:	Shielding Angle:

pcc	80%			70%			50%			30%			10%			0
pw	50%	30%	10%	50%	30%	10%	50%	30%	10%	50%	30%	10%	50%	30%	10%	0
pfc	20%			20%			20%			20%			20%			0
RCR	RCR:Room Cavity Ratio						Coefficients of Utilization(CU)									
0.0	1.19	1.19	1.19	1.16	1.16	1.16	1.11	1.11	1.11	1.06	1.06	1.06	1.02	1.02	1.02	1.00
1.0	1.08	1.04	1.01	1.05	1.03	.00	1.01	.99	.97	.98	.96	.94	.94	.92	.91	.89
2.0	.97	.91	.86	.95	.90	.85	.91	.87	.84	.88	.85	.82	.85	.82	.80	.78
3.0	.87	.80	.74	.85	.79	.74	.82	.77	.72	.80	.75	.71	.77	.73	.70	.68
4.0	.78	.70	.65	.77	.70	.64	.74	.68	.63	.72	.67	.63	.70	.65	.62	.60
5.0	.70	.62	.57	.69	.62	.56	.67	.61	.56	.65	.60	.55	.64	.59	.55	.53
6.0	.64	.56	.50	.63	.55	.50	.61	.54	.49	.60	.54	.49	.58	.53	.49	.47
7.0	.58	.50	.45	.57	.50	.44	.56	.49	.44	.54	.48	.44	.53	.48	.44	.42
8.0	.53	.45	.40	.53	.45	.40	.51	.44	.40	.50	.44	.39	.49	.43	.39	.37
9.0	.49	.41	.36	.48	.41	.36	.47	.41	.36	.46	.40	.36	.45	.40	.36	.34
10.0	.45	.38	.33	.45	.38	.33	.44	.37	.33	.43	.37	.33	.42	.36	.32	.31



C Range: 0 - 360DEG
 C Interval: 15.0DEG
 Test Speed: HIGH
 Temperature:25.3°C
 Operators:
 Test Date:2023-02-26

γ Range: 0 - 90DEG
 γ Interval: 1.0DEG
 Test System:EVERFINE GO-2000B_V1 SYSTEM V2.00.458
 Humidity:65.0%
 Test Distance:9.420m [K=1.0000]
 Remarks:

WEC AND CCEC

Test:U:0V I:0A P:0W PF:0.0000 Freq:0Hz		
Lamp Flux:886.79x1 lm		
NAME:	TYPE:	WEIGHT:
SPEC.:	DIM.:	SERIAL No.:
MFR.:	SUR.:	Shielding Angle:

ρ_{CC}	80%			70%			50%			30%			10%			0
ρ_w	50%	30%	10%	50%	30%	10%	50%	30%	10%	50%	30%	10%	50%	30%	10%	0
ρ_{fc}	20%			20%			20%			20%			20%			0
RCR	RCR:Room Cavity Ratio						Wall Exitance Coefficients (WEC)									
0.0																
1.0	.236	.134	.043	.230	.131	.042	.217	.124	.040	.205	.118	.038	.194	.112	.036	
2.0	.233	.128	.039	.227	.125	.039	.216	.120	.037	.206	.115	.036	.196	.111	.035	
3.0	.224	.119	.036	.218	.117	.035	.209	.113	.034	.200	.109	.034	.191	.106	.033	
4.0	.212	.110	.032	.208	.109	.032	.199	.106	.032	.191	.103	.031	.184	.100	.030	
5.0	.201	.102	.030	.197	.101	.029	.189	.099	.029	.182	.096	.029	.176	.094	.028	
6.0	.190	.095	.027	.186	.094	.027	.180	.092	.027	.173	.090	.026	.167	.088	.026	
7.0	.180	.089	.025	.176	.088	.025	.170	.086	.025	.165	.084	.025	.159	.083	.024	
8.0	.170	.083	.023	.167	.082	.023	.162	.081	.023	.156	.079	.023	.152	.078	.023	
9.0	.161	.078	.022	.158	.077	.022	.153	.076	.021	.149	.075	.021	.144	.073	.021	
10.0	.153	.073	.020	.150	.073	.020	.146	.071	.020	.142	.070	.020	.138	.069	.020	

ρ_{CC}	80%			70%			50%			30%			10%			0
ρ_w	50%	30%	10%	50%	30%	10%	50%	30%	10%	50%	30%	10%	50%	30%	10%	0
ρ_{fc}	20%			20%			20%			20%			20%			0
RCR	RCR:Room Cavity Ratio						Ceiling Cavity Exitance Coefficients (CCEC)									
0.0	.190	.190	.190	.163	.163	.163	.111	.111	.111	.064	.064	.064	.020	.020	.020	
1.0	.175	.157	.140	.150	.135	.121	.103	.093	.083	.059	.054	.049	.019	.017	.016	
2.0	.164	.132	.105	.141	.114	.091	.096	.079	.063	.056	.046	.037	.018	.015	.012	
3.0	.156	.114	.081	.133	.098	.070	.092	.068	.049	.053	.040	.029	.017	.013	.009	
4.0	.148	.100	.064	.127	.087	.055	.087	.060	.039	.050	.035	.023	.016	.012	.008	
5.0	.141	.089	.052	.121	.077	.045	.083	.054	.032	.048	.032	.019	.016	.010	.006	
6.0	.134	.081	.043	.115	.070	.037	.080	.049	.026	.046	.029	.016	.015	.009	.005	
7.0	.128	.074	.036	.110	.064	.031	.076	.045	.022	.044	.026	.013	.014	.009	.004	
8.0	.122	.068	.031	.105	.059	.027	.073	.041	.019	.042	.024	.011	.014	.008	.004	
9.0	.117	.063	.027	.101	.055	.023	.070	.039	.017	.041	.023	.010	.013	.007	.003	
10.0	.112	.059	.024	.097	.051	.021	.067	.036	.015	.039	.021	.009	.013	.007	.003	

C Range: 0 - 360DEG
 C Interval: 15.0DEG
 Test Speed: HIGH
 Temperature:25.3°C
 Operators:
 Test Date:2023-02-26

γ Range: 0 - 90DEG
 γ Interval: 1.0DEG
 Test System:EVERFINE GO-2000B_V1 SYSTEM V2.00.458
 Humidity:65.0%
 Test Distance:9.420m [K=1.0000]
 Remarks:

UGR(Unified Glare Rating) Table

Test:U:0V I:0A P:0W PF:0.0000 Freq:0Hz										
Lamp Flux:886.79x1 lm										
NAME:			TYPE:			WEIGHT:				
SPEC.:			DIM.:			SERIAL No.:				
MFR.:			SUR.:			Shielding Angle:				
ceiling/cavity	0.7	0.7	0.5	0.5	0.3	0.7	0.7	0.5	0.5	0.3
walls	0.5	0.3	0.5	0.3	0.3	0.5	0.3	0.5	0.3	0.3
working plane	0.2	0.2	0.2	0.2	0.2	0.2	0.2	0.2	0.2	0.2
Room dimensions	Viewed crosswise					Viewed endwise				
x = 2H y = 2H	22.8	24.1	23.1	24.3	24.5	17.6	19.0	17.9	19.1	19.3
3H	23.0	24.2	23.2	24.4	24.6	17.5	18.7	17.7	18.9	19.1
4H	22.9	24.0	23.2	24.3	24.5	17.4	18.5	17.7	18.8	19.0
6H	22.8	23.9	23.1	24.1	24.4	17.3	18.4	17.6	18.6	18.9
8H	22.7	23.8	23.1	24.0	24.3	17.2	18.3	17.6	18.5	18.8
12H	22.7	23.7	23.0	24.0	24.3	17.2	18.2	17.5	18.5	18.8
4H 2H	22.6	23.7	22.9	24.0	24.2	17.9	19.1	18.2	19.3	19.6
3H	22.8	23.8	23.1	24.1	24.3	17.8	18.8	18.2	19.1	19.4
4H	22.7	23.6	23.1	23.9	24.2	17.7	18.6	18.1	18.9	19.3
6H	22.6	23.4	23.0	23.8	24.1	17.7	18.4	18.1	18.8	19.1
8H	22.6	23.3	23.0	23.7	24.0	17.6	18.3	18.0	18.7	19.1
12H	22.6	23.2	23.0	23.6	24.0	17.6	18.2	18.0	18.6	19.0
8H 4H	22.6	23.3	23.0	23.7	24.0	17.6	18.4	18.1	18.7	19.1
6H	22.5	23.1	22.9	23.5	23.9	17.6	18.2	18.0	18.6	19.0
8H	22.5	23.0	22.9	23.4	23.9	17.5	18.1	18.0	18.5	18.9
12H	22.4	22.9	22.9	23.3	23.8	17.5	17.9	18.0	18.4	18.9
12H 4H	22.5	23.2	23.0	23.6	24.0	17.6	18.3	18.0	18.6	19.0
6H	22.5	23.0	22.9	23.4	23.9	17.5	18.1	18.0	18.5	18.9
8H	22.4	22.9	22.9	23.3	23.8	17.5	17.9	18.0	18.4	18.9
Variations with the observer position at spacings(CIE Pub.117):										
S = 1.0H	+ 0.6 / - 0.4					+ 1.8 / - 4.0				
1.5H	+ 1.2 / - 1.7					+ 1.0 / - 1.8				
2.0H	+ 2.5 / - 4.8					+ 3.0 / - 7.5				

CIE Pub.117, 886.8 lm Total Lamp Luminous Flux Correct (8log(F/F0) = -0.4)
 Area: 0.033 m2

C Range: 0 - 360DEG
 C Interval: 15.0DEG
 Test Speed: HIGH
 Temperature:25.3°C
 Operators:
 Test Date:2023-02-26

γ Range: 0 - 90DEG
 γ Interval: 1.0DEG
 Test System:EVERFINE GO-2000B_V1 SYSTEM V2.00.458
 Humidity:65.0%
 Test Distance:9.420m [K=1.0000]
 Remarks:

UTILIZATION FACTORS TABLE

Test:U:0V I:0A P:0W PF:0.0000 Freq:0Hz Lamp Flux:886.79x1 lm		
NAME:	TYPE:	WEIGHT:
SPEC.:	DIM.:	SERIAL No.:
MFR.:	SUR.:	Shielding Angle:

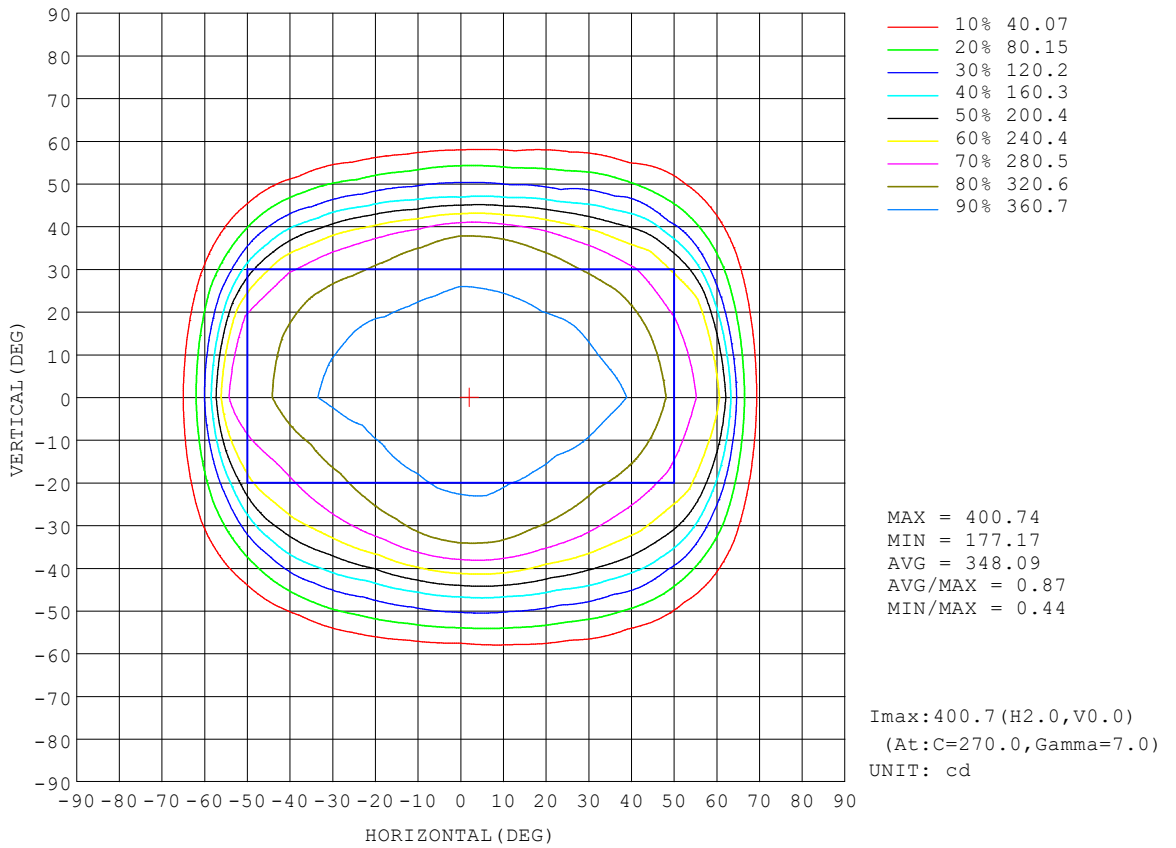
REFLECTANCE										
Ceiling	0.8	0.8	0.8	0.7	0.7	0.7	0.5	0.5	0.5	0
Walls	0.7	0.5	0.3	0.7	0.5	0.3	0.7	0.5	0.3	0
Working plane	0.2	0.2	0.2	0.2	0.2	0.2	0.2	0.2	0.2	0
ROOM INDEX	UTILIZATION FACTORS (PERCENT) $k(RI) \times RCR = 5$									
k = 0.60	65	54	48	64	54	48	63	54	48	42
0.80	75	65	59	74	65	59	73	64	59	53
1.00	84	75	69	83	75	69	81	75	68	62
1.25	91	83	77	90	82	77	87	81	76	70
1.50	96	88	82	94	87	82	91	85	81	75
2.00	101	95	90	100	94	89	97	92	88	81
2.50	104	98	94	102	97	93	99	94	91	84
3.00	107	102	97	105	100	96	101	97	94	87
4.00	110	105	102	107	104	100	103	100	98	90
5.00	111	108	104	109	106	103	105	102	100	91
ROOM INDEX	UF(total)									Direct
According to DIN EN 13032-2 2004			Suspended				SHRNOM = 1.25			

C Range: 0 - 360DEG
 C Interval: 15.0DEG
 Test Speed: HIGH
 Temperature:25.3°C
 Operators:
 Test Date:2023-02-26

γ Range: 0 - 90DEG
 γ Interval: 1.0DEG
 Test System:EVERFINE GO-2000B_V1 SYSTEM V2.00.458
 Humidity:65.0%
 Test Distance:9.420m [K=1.0000]
 Remarks:

ISOCANDELA DIAGRAM

Test:U:0V I:0A P:0W PF:0.0000 Freq:0Hz Lamp Flux:886.79x1 lm		
NAME:	TYPE:	WEIGHT:
SPEC.:	DIM.:	SERIAL No.:
MFR.:	SUR.:	Shielding Angle:

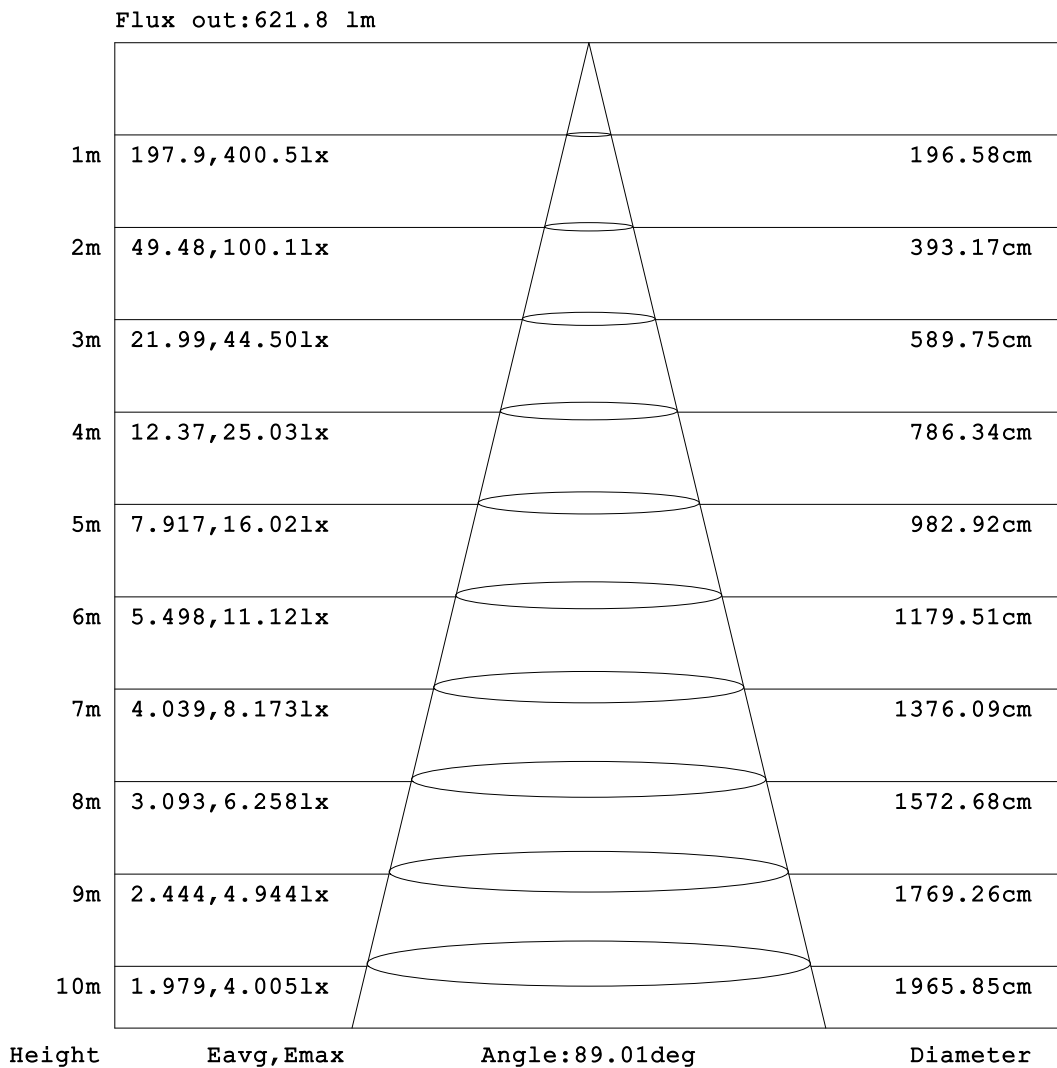


C Range: 0 - 360DEG
 C Interval: 15.0DEG
 Test Speed: HIGH
 Temperature:25.3°C
 Operators:
 Test Date:2023-02-26

γ Range: 0 - 90DEG
 γ Interval: 1.0DEG
 Test System:EVERFINE GO-2000B_V1 SYSTEM V2.00.458
 Humidity:65.0%
 Test Distance:9.420m [K=1.0000]
 Remarks:

AAI Figure

Test:U:0V I:0A P:0W PF:0.0000 Freq:0Hz Lamp Flux:886.79x1 lm		
NAME:	TYPE:	WEIGHT:
SPEC.:	DIM.:	SERIAL No.:
MFR.:	SUR.:	Shielding Angle:



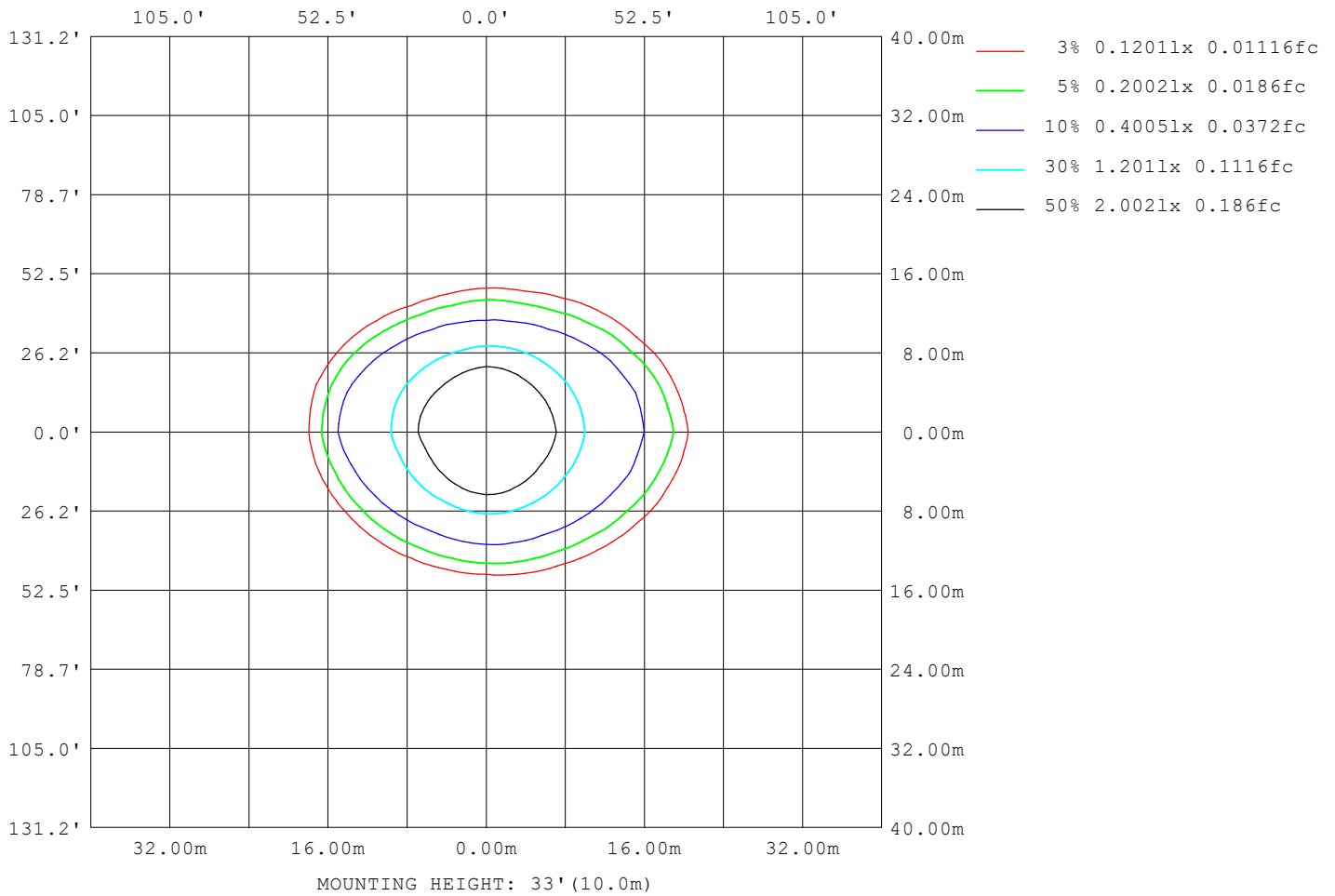
Note:The Curves indicate the illuminated area and the average illumination when the luminaire is at different distance.

C Range: 0 - 360DEG
C Interval: 15.0DEG
Test Speed: HIGH
Temperature:25.3°C
Operators:
Test Date:2023-02-26

γ Range: 0 - 90DEG
γ Interval: 1.0DEG
Test System:EVERFINE GO-2000B_V1 SYSTEM V2.00.458
Humidity:65.0%
Test Distance:9.420m [K=1.0000]
Remarks:

ISOLUX DIAGRAM

Test:U:0V I:0A P:0W PF:0.0000 Freq:0Hz Lamp Flux:886.79x1 lm		
NAME:	TYPE:	WEIGHT:
SPEC.:	DIM.:	SERIAL No.:
MFR.:	SUR.:	Shielding Angle:



C Range: 0 - 360DEG
 C Interval: 15.0DEG
 Test Speed: HIGH
 Temperature:25.3°C
 Operators:
 Test Date:2023-02-26

γ Range: 0 - 90DEG
 γ Interval: 1.0DEG
 Test System:EVERFINE GO-2000B_V1 SYSTEM V2.00.458
 Humidity:65.0%
 Test Distance:9.420m [K=1.0000]
 Remarks:

LED Avg.L Report

Test:U:0V I:0A P:0W PF:0.0000 Freq:0Hz Lamp Flux:886.79x1 lm		
NAME:	TYPE:	WEIGHT:
SPEC.:	DIM.:	SERIAL No.:
MFR.:	SUR.:	Shielding Angle:

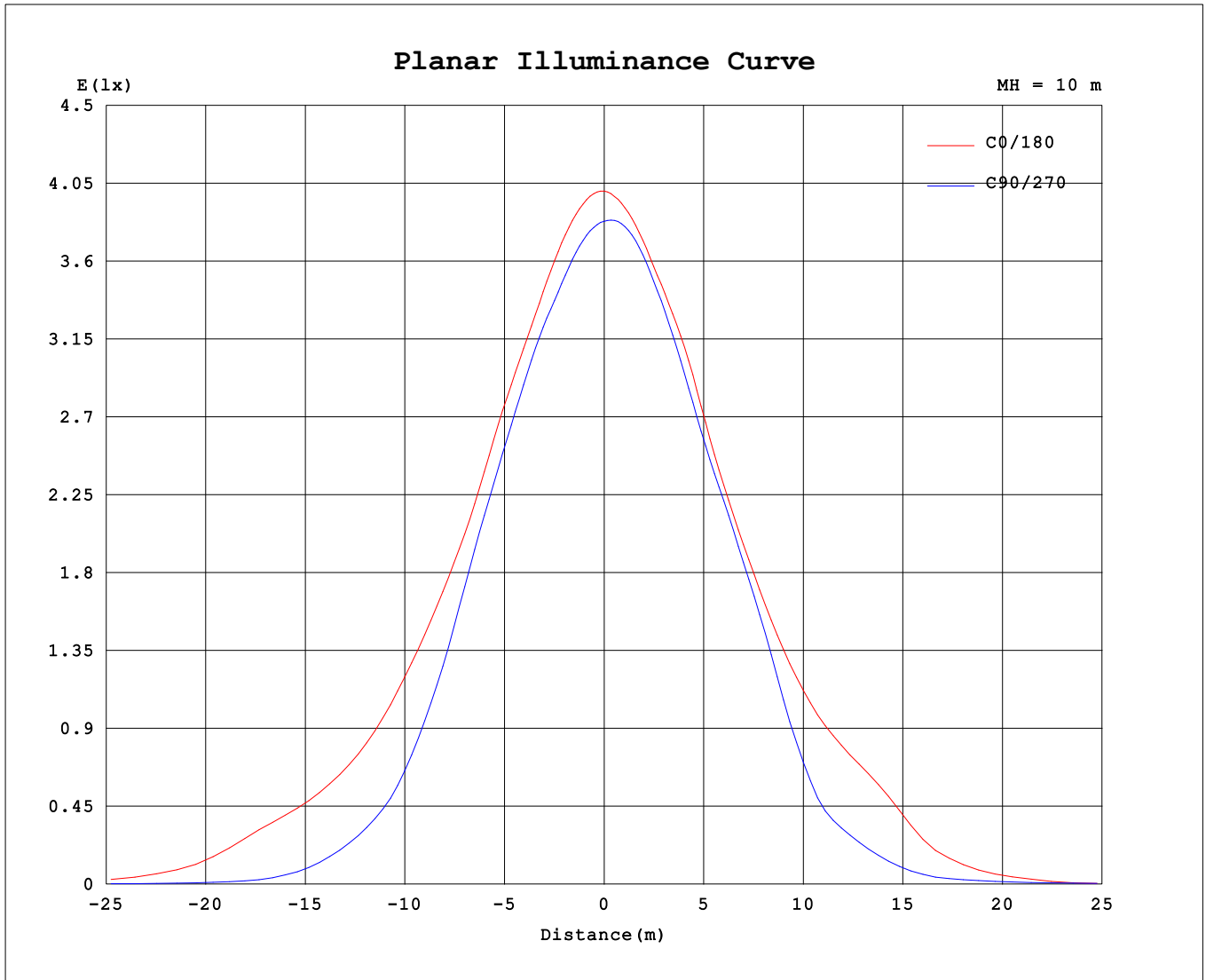
AvgL	cd/m2
L_0~180 (65) av	5263
L_0~180 (75) av	627
L_0~180 (85) av	249
L_90~270 (65) av	887
L_90~270 (75) av	383
L_90~270 (85) av	89
L_45 (65) av	1746
L_45 (75) av	689
L_45 (85) av	196

Standard: GB/T 29293-2012

C Range: 0 - 360DEG
 C Interval: 15.0DEG
 Test Speed: HIGH
 Temperature:25.3°C
 Operators:
 Test Date:2023-02-26

γ Range: 0 - 90DEG
 γ Interval: 1.0DEG
 Test System:EVERFINE GO-2000B_V1 SYSTEM V2.00.458
 Humidity:65.0%
 Test Distance:9.420m [K=1.0000]
 Remarks:

Planar Illuminance Curve



C Range: 0 - 360DEG
 C Interval: 15.0DEG
 Test Speed: HIGH
 Temperature: 25.3°C
 Operators:
 Test Date: 2023-02-26

γ Range: 0 - 90DEG
 γ Interval: 1.0DEG
 Test System: EVERFINE GO-2000B_V1 SYSTEM V2.00.458
 Humidity: 65.0%
 Test Distance: 9.420m [K=1.0000]
 Remarks:

