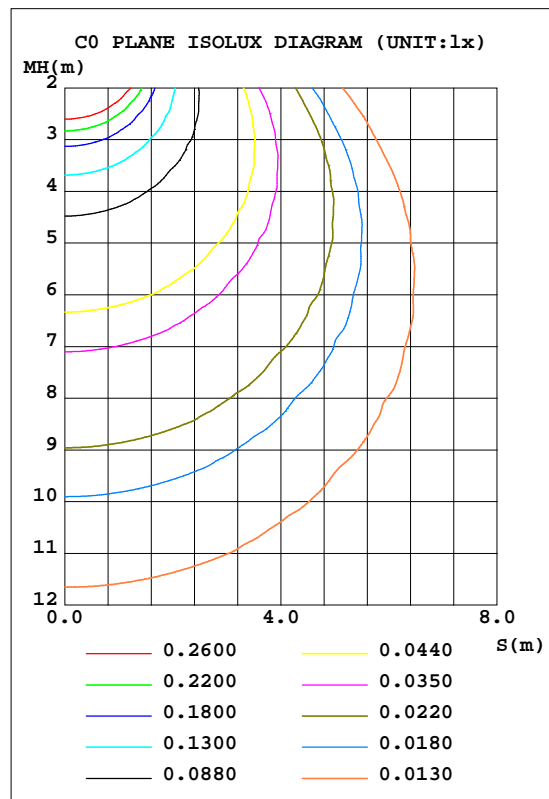
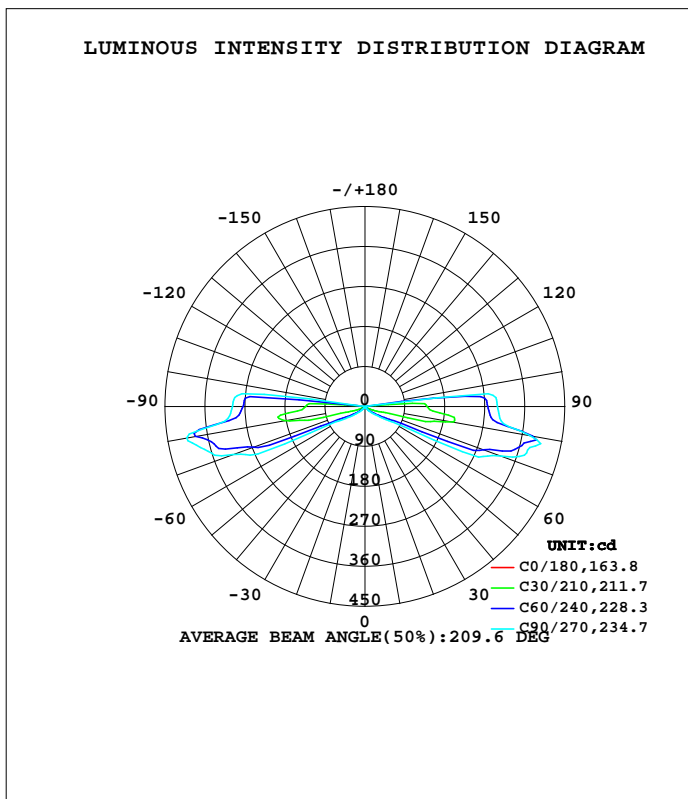


LUMINAIRE PHOTOMETRIC TEST REPORT

NAME:	TYPE:	WEIGHT:
SPEC.:	DIM.:	SERIAL No.:
MFR.: Ningbo Parker Electric Co.,Ltd	SUR.:	Shielding Angle:

DATA OF LAMP		PHOTOMETRIC DATA				Eff: 52.70 lm/W
MODEL	PW2040	I _{max} (cd)	410.1	S/MH(C0/180)	1.39	
NOMINAL POWER(W)	12	LOR(%)	100.0	S/MH(C90/270)	12.81	
RATED VOLTAGE(V)	230	TOTAL FLUX(lm)	640.93	h UP, DN(C0-180)	9.6, 40.8	
NOMINAL FLUX(lm)	640.934	CIE CLASS	SEMI-D.	h UP, DN(C180-360)	9.5, 40.1	
LAMPS INSIDE	1	h up(%)	19.1	CIBSE SHR NOM	0.75	
TEST VOLTAGE(V)	230	h down(%)	80.9	CIBSE SHR MAX	0.95	



C Range: 0 - 360DEG
 C Interval: 10.0DEG
 Test Speed: HIGH
 Temperature: 25.3DEG
 Operators:
 Test Date: 21 July 2023

g Range: 0 - 180DEG
 g Interval: 1.0DEG
 Test System: EVERFINE GO-2000B_V1 SYSTEM V2.0.400
 Humidity: 65.0%
 Test Distance: 7.110m [K=1.0000]
 Remarks:

ZONAL FLUX DIAGRAM

ZONAL FLUX DIAGRAM:

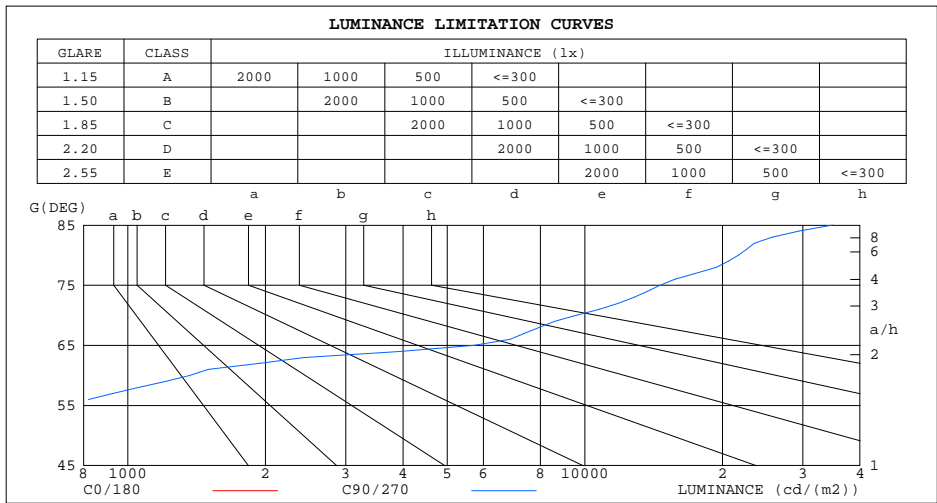
g	C0	C45	C90	C135	C180	C225	C270	C315	g	F zone	F total	%lum,lamp
10	1.711	1.760	1.822	1.749	1.692	1.725	1.748	1.743	0- 10	0.1651	0.1651	0.03,0.03
20	1.682	1.894	2.088	1.829	1.655	1.798	1.970	1.810	10- 20	0.5074	0.6725	0.10,0.10
30	1.631	2.278	3.091	2.036	1.589	2.059	2.877	1.996	20- 30	0.9228	1.595	0.25,0.25
40	1.545	3.481	10.32	2.751	1.493	3.020	9.115	2.665	30- 40	1.834	3.429	0.54,0.54
50	1.405	11.33	26.45	7.101	1.360	9.977	24.24	6.578	40- 50	5.693	9.122	1.42,1.42
60	1.210	29.05	68.45	19.59	1.178	26.03	63.09	18.41	50- 60	16.26	25.39	3.96,3.96
70	1.042	150.0	328.2	80.92	0.9968	138.6	316.9	59.63	60- 70	74.70	100.1	15.6,15.6
80	0.9011	309.0	377.4	244.7	0.8700	294.8	407.5	242.3	70- 80	204.9	305.0	47.6,47.6
90	0.4712	216.1	298.7	172.3	0.6155	209.7	298.5	176.5	80- 90	213.3	518.3	80.9,80.9
100	0.3803	1.718	13.70	1.973	0.4108	1.937	11.50	1.558	90-100	119.4	637.7	99.5,99.5
110	0.3289	0.6712	1.345	0.9398	0.3356	1.042	1.339	0.5900	100-110	1.530	639.2	99.7,99.7
120	0.3142	0.4225	0.7235	0.5327	0.2912	0.5963	0.7351	0.3961	110-120	0.6460	639.9	99.8,99.8
130	0.3022	0.3321	0.4024	0.3694	0.2809	0.3792	0.4345	0.3353	120-130	0.3735	640.2	99.9,99.9
140	0.2939	0.2988	0.3284	0.3282	0.2809	0.3391	0.3532	0.3156	130-140	0.2593	640.5	99.9,99.9
150	0.2905	0.2927	0.3017	0.3099	0.2809	0.3093	0.3302	0.3076	140-150	0.1962	640.7	100,100
160	0.2883	0.2900	0.2985	0.3051	0.2809	0.2967	0.3089	0.3009	150-160	0.1399	640.8	100,100
170	0.2880	0.2854	0.2954	0.3020	0.2809	0.2930	0.2977	0.2970	160-170	0.0843	640.9	100,100
180	0.2878	0.2852	0.2931	0.2959	0.2809	0.2887	0.2931	0.2959	170-180	0.0282	640.9	100,100
DEG	LUMINOUS INTENSITY:cd								UNIT:lm			

C Range: 0 - 360DEG
 C Interval: 10.0DEG
 Test Speed: HIGH
 Temperature:25.3DEG
 Operators:
 Test Date:21 July 2023

g Range: 0 - 180DEG
 g Interval: 1.0DEG
 Test System:EVERFINE GO-2000B_V1 SYSTEM V2.0.400
 Humidity:65.0%
 Test Distance:7.110m [K=1.0000]
 Remarks:

LUMINANCE LIMITATION CURVES

NAME:	TYPE:	WEIGHT:
SPEC.:	DIM.:	SERIAL No.:
MFR.: Ningbo Parker Electric Co.,Ltd	SUR.:	Shielding Angle:



LUMINANCE cd/(m2)		
G(DEG)	C0/180	C90/270
85	95	34867
80	53	21682
75	38	14622
70	31	9573
65	27	5707
60	25	1366
55	23	724
50	22	410
45	22	240

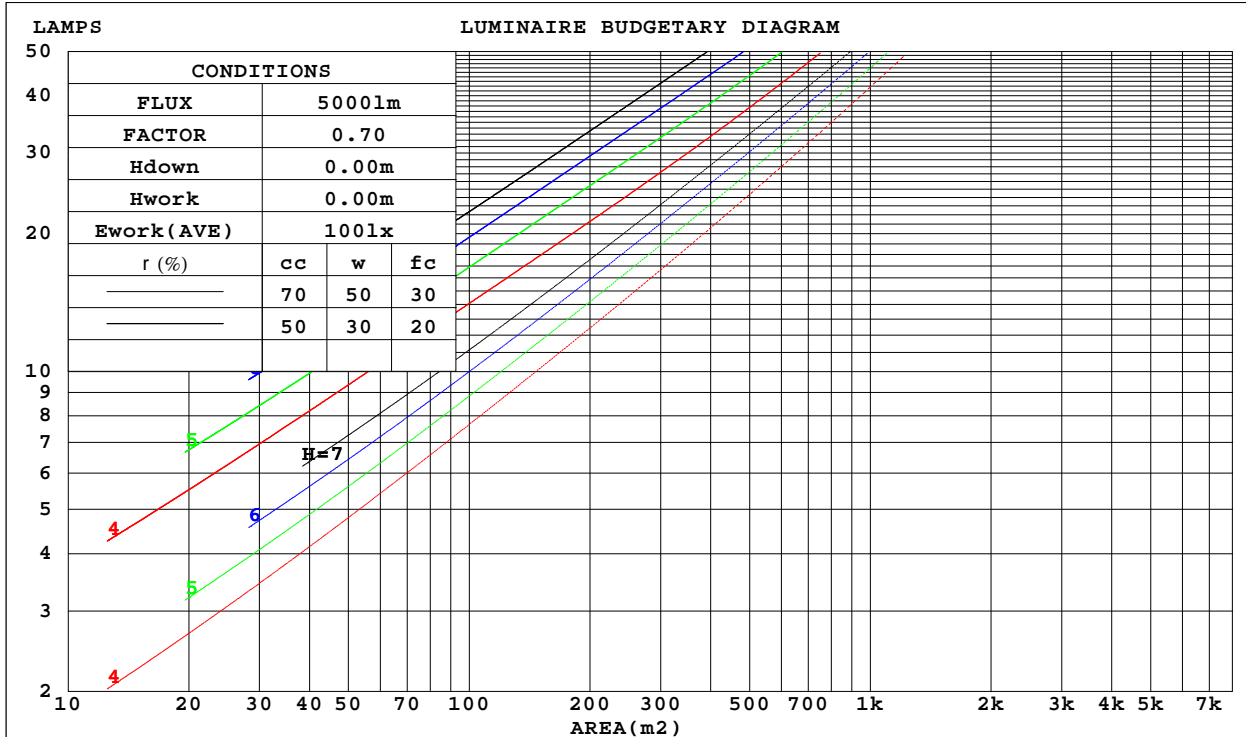
C Range: 0 - 360DEG
 C Interval: 10.0DEG
 Test Speed: HIGH
 Temperature: 25.3DEG
 Operators:
 Test Date: 21 July 2023

g Range: 0 - 180DEG
 g Interval: 1.0DEG
 Test System: EVERFINE GO-2000B_V1 SYSTEM V2.0.400
 Humidity: 65.0%
 Test Distance: 7.110m [K=1.0000]
 Remarks:

CU AND LUMINAIRE BUDGETARY ESTIMATE DIAGRAM

NAME:	TYPE:	WEIGHT:
SPEC.:	DIM.:	SERIAL No.:
MFR.: Ningbo Parker Electric Co.,Ltd	SUR.:	Shielding Angle:

r _{cc}	80%			70%			50%			30%			10%			0
r _w	50%	30%	10%	50%	30%	10%	50%	30%	10%	50%	30%	10%	50%	30%	10%	0
r _{fc}	20%			20%			20%			20%			20%			0
RCR	RCR:Room Cavity Ratio						Coefficients of Utilization(CU)									
0.0	1.14	1.14	1.14	1.10	1.10	1.10	1.00	1.00	1.00	.92	.92	.92	.84	.84	.84	.81
1.0	.76	.65	.55	.71	.61	.53	.63	.55	.47	.55	.48	.42	.48	.42	.37	.33
2.0	.58	.45	.34	.54	.42	.32	.47	.37	.28	.40	.31	.24	.34	.27	.20	.16
3.0	.47	.34	.23	.44	.31	.21	.38	.27	.18	.32	.23	.15	.26	.19	.12	.08
4.0	.40	.27	.17	.37	.25	.15	.32	.21	.13	.27	.18	.11	.22	.15	.08	.05
5.0	.35	.22	.13	.32	.21	.12	.28	.18	.10	.23	.15	.08	.19	.12	.06	.03
6.0	.31	.19	.11	.29	.18	.10	.25	.15	.08	.21	.13	.06	.18	.10	.05	.02
7.0	.28	.17	.09	.26	.16	.08	.23	.13	.07	.19	.11	.05	.16	.09	.04	.01
8.0	.25	.15	.08	.24	.14	.07	.21	.12	.06	.18	.10	.05	.15	.08	.03	.01
9.0	.23	.13	.07	.22	.13	.06	.19	.11	.05	.16	.09	.04	.14	.08	.03	.01
10.0	.21	.12	.06	.20	.11	.05	.18	.10	.05	.15	.08	.04	.13	.07	.03	.00



C Range: 0 - 360DEG
 C Interval: 10.0DEG
 Test Speed: HIGH
 Temperature:25.3DEG
 Operators:
 Test Date:21 July 2023

g Range: 0 - 180DEG
 g Interval: 1.0DEG
 Test System:EVERFINE GO-2000B_V1 SYSTEM V2.0.400
 Humidity:65.0%
 Test Distance:7.110m [K=1.0000]
 Remarks:

WEC AND CCEC

NAME:	TYPE:	WEIGHT:
SPEC.:	DIM.:	SERIAL No.:
MFR.: Ningbo Parker Electric Co.,Ltd	SUR.:	Shielding Angle:

r cc	80%			70%			50%			30%			10%			0
r w	50%	30%	10%	50%	30%	10%	50%	30%	10%	50%	30%	10%	50%	30%	10%	0
r fc	20%			20%			20%			20%			20%			0
RCR	RCR:Room Cavity Ratio						Wall Exitance Coefficients(WEC)									
0.0																
1.0	.763	.434	.137	.749	.427	.136	.722	.414	.132	.698	.403	.129	.676	.392	.126	
2.0	.559	.306	.094	.546	.301	.093	.522	.290	.090	.500	.280	.088	.479	.271	.085	
3.0	.446	.238	.071	.435	.233	.070	.413	.224	.068	.393	.215	.066	.374	.207	.064	
4.0	.372	.193	.057	.362	.189	.056	.342	.181	.054	.324	.174	.052	.307	.167	.051	
5.0	.320	.163	.047	.310	.159	.046	.292	.152	.045	.276	.146	.043	.260	.139	.042	
6.0	.280	.141	.040	.272	.137	.040	.256	.131	.038	.241	.125	.037	.227	.119	.035	
7.0	.250	.124	.035	.243	.121	.034	.228	.115	.033	.214	.110	.032	.201	.105	.031	
8.0	.226	.110	.031	.219	.108	.030	.206	.103	.029	.193	.098	.028	.181	.093	.027	
9.0	.206	.100	.028	.200	.097	.027	.188	.093	.026	.176	.088	.025	.165	.084	.024	
10.0	.190	.091	.025	.184	.089	.025	.173	.085	.024	.162	.080	.023	.152	.076	.022	

r cc	80%			70%			50%			30%			10%			0
r w	50%	30%	10%	50%	30%	10%	50%	30%	10%	50%	30%	10%	50%	30%	10%	0
r fc	20%			20%			20%			20%			20%			0
RCR	RCR:Room Cavity Ratio						Ceiling Cavity Exitance Coefficients(CCEC)									
0.0	.336	.336	.336	.287	.287	.287	.196	.196	.196	.113	.113	.113	.036	.036	.036	
1.0	.359	.299	.245	.307	.257	.211	.210	.177	.146	.121	.102	.085	.039	.033	.027	
2.0	.356	.279	.214	.305	.240	.185	.209	.166	.129	.120	.097	.075	.039	.031	.025	
3.0	.347	.264	.198	.298	.228	.172	.204	.158	.120	.118	.092	.071	.038	.030	.023	
4.0	.337	.253	.189	.289	.219	.165	.199	.152	.116	.115	.089	.069	.037	.029	.023	
5.0	.326	.244	.184	.280	.211	.160	.193	.148	.113	.112	.087	.067	.036	.028	.022	
6.0	.315	.236	.180	.271	.205	.157	.187	.143	.111	.108	.084	.066	.035	.028	.022	
7.0	.306	.230	.177	.263	.199	.154	.182	.140	.109	.106	.082	.065	.034	.027	.022	
8.0	.297	.224	.175	.255	.195	.152	.177	.137	.108	.103	.081	.064	.033	.026	.021	
9.0	.288	.219	.173	.249	.190	.151	.172	.134	.107	.100	.079	.064	.032	.026	.021	
10.0	.281	.215	.171	.242	.187	.149	.168	.131	.106	.098	.078	.063	.032	.026	.021	

C Range: 0 - 360DEG
 C Interval: 10.0DEG
 Test Speed: HIGH
 Temperature:25.3DEG
 Operators:
 Test Date:21 July 2023

g Range: 0 - 180DEG
 g Interval: 1.0DEG
 Test System:EVERFINE GO-2000B_V1 SYSTEM V2.0.400
 Humidity:65.0%
 Test Distance:7.110m [K=1.0000]
 Remarks:

UGR(Unified Glare Rating) Table

NAME:		TYPE:					WEIGHT:					
SPEC.:		DIM.:					SERIAL No.:					
MFR.: Ningbo Parker Electric Co.,Ltd		SUR.:					Shielding Angle:					
ceiling/cavity		0.7	0.7	0.5	0.5	0.3	0.7	0.7	0.5	0.5	0.3	
walls		0.5	0.3	0.5	0.3	0.3	0.5	0.3	0.5	0.3	0.3	
working plane		0.2	0.2	0.2	0.2	0.2	0.2	0.2	0.2	0.2	0.2	
Room dimensions		Viewed crosswise					Viewed endwise					
x = 2H y = 2H	2H	-3.4	-1.6	-2.9	-1.0	-0.3	12.1	13.9	12.6	14.5	15.2	
	3H	-0.4	1.3	0.1	1.9	2.6	25.3	27.0	25.9	27.6	28.4	
	4H	1.3	3.0	1.9	3.6	4.3	28.6	30.3	29.2	30.9	31.7	
	6H	2.4	4.0	3.0	4.6	5.4	31.6	33.2	32.2	33.8	34.6	
	8H	2.9	4.5	3.5	5.2	5.9	32.6	34.1	33.2	34.8	35.6	
	12H	4.7	6.3	5.4	6.9	7.7	33.6	35.1	34.2	35.8	36.6	
	4H	2H	10.0	11.7	10.6	12.3	13.1	13.9	15.6	14.5	16.2	17.0
		3H	13.3	14.8	13.9	15.5	16.3	26.5	28.0	27.1	28.7	29.5
		4H	15.7	17.1	16.3	17.8	18.6	30.0	31.4	30.6	32.1	32.9
		6H	17.2	18.5	17.9	19.3	20.1	33.0	34.4	33.7	35.1	35.9
		8H	17.8	19.1	18.5	19.8	20.6	34.1	35.4	34.8	36.1	37.0
		12H	18.0	19.2	18.7	19.9	20.8	35.2	36.5	35.9	37.2	38.1
	8H	4H	25.0	26.3	25.6	27.0	27.8	30.6	31.9	31.2	32.6	33.4
		6H	26.9	28.1	27.6	28.8	29.7	34.0	35.1	34.7	35.9	36.7
		8H	27.7	28.8	28.4	29.6	30.5	35.2	36.3	35.9	37.0	37.9
		12H	28.1	29.1	28.8	29.8	30.7	36.5	37.5	37.3	38.3	39.2
	12H	4H	26.6	27.8	27.3	28.6	29.4	30.6	31.9	31.3	32.6	33.4
		6H	28.9	30.0	29.6	30.8	31.6	34.2	35.2	34.9	36.0	36.9
		8H	29.9	30.9	30.7	31.7	32.6	35.5	36.5	36.2	37.3	38.2
Variations with the observer position at spacings:												
S = 1.0H		+ 0.0 / - 0.1					+ 0.1 / - 0.1					
	1.5H	+ 0.1 / - 0.1					+ 0.2 / - 0.3					
	2.0H	+ 0.3 / - 0.3					+ 0.1 / - 0.2					

CIE Pub.117, 640.9 lm Total Lamp Luminous Flux Correct (8log(F/F0) = -1.5)

C Range: 0 - 360DEG
 C Interval: 10.0DEG
 Test Speed: HIGH
 Temperature:25.3DEG
 Operators:
 Test Date:21 July 2023

g Range: 0 - 180DEG
 g Interval: 1.0DEG
 Test System:EVERFINE GO-2000B_V1 SYSTEM V2.0.400
 Humidity:65.0%
 Test Distance:7.110m [K=1.0000]
 Remarks:

UTILIZATION FACTORS TABLE

NAME:	TYPE:	WEIGHT:
SPEC.:	DIM.:	SERIAL No.:
MFR.: Ningbo Parker Electric Co.,Ltd	SUR.:	Shielding Angle:

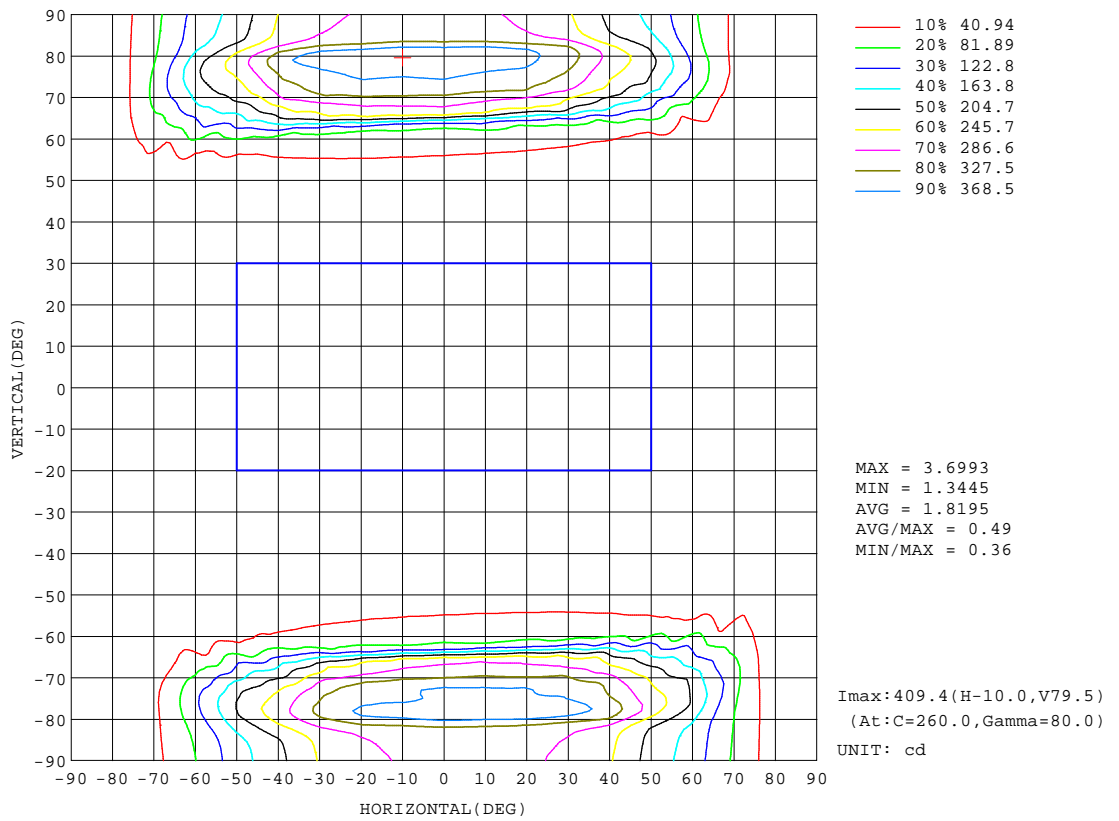
REFLECTANCE										
Ceiling	0.8	0.8	0.8	0.7	0.7	0.7	0.5	0.5	0.5	0
Walls	0.7	0.5	0.3	0.7	0.5	0.3	0.7	0.5	0.3	0
Working plane	0.2	0.2	0.2	0.2	0.2	0.2	0.2	0.2	0.2	0
ROOM INDEX	UTILIZATION FACTORS(PERCENT) $k(RI) \times RCR = 5$									
k = 0.60	34	19	10	33	18	10	31	18	10	2
0.80	39	22	12	38	22	12	35	21	11	2
1.00	44	26	14	42	25	14	38	27	13	2
1.25	49	30	18	47	29	17	43	27	16	4
1.50	54	35	21	51	34	21	46	31	20	7
2.00	62	43	29	58	41	28	52	37	26	11
2.50	67	49	35	64	47	34	57	43	32	16
3.00	72	55	41	68	52	40	61	48	37	21
4.00	79	63	50	75	60	48	67	55	45	28
5.00	84	70	58	79	66	55	71	60	51	33
ROOM INDEX	UF(total)									Direct
According to DIN EN 13032-2 2004			Suspended				SHRNOM = 1.25			

C Range: 0 - 360DEG
 C Interval: 10.0DEG
 Test Speed: HIGH
 Temperature:25.3DEG
 Operators:
 Test Date:21 July 2023

g Range: 0 - 180DEG
 g Interval: 1.0DEG
 Test System:EVERFINE GO-2000B_V1 SYSTEM V2.0.400
 Humidity:65.0%
 Test Distance:7.110m [K=1.0000]
 Remarks:

ISOCANDELA DIAGRAM

NAME:	TYPE:	WEIGHT:
SPEC.:	DIM.:	SERIAL No.:
MFR.: Ningbo Parker Electric Co.,Ltd	SUR.:	Shielding Angle:



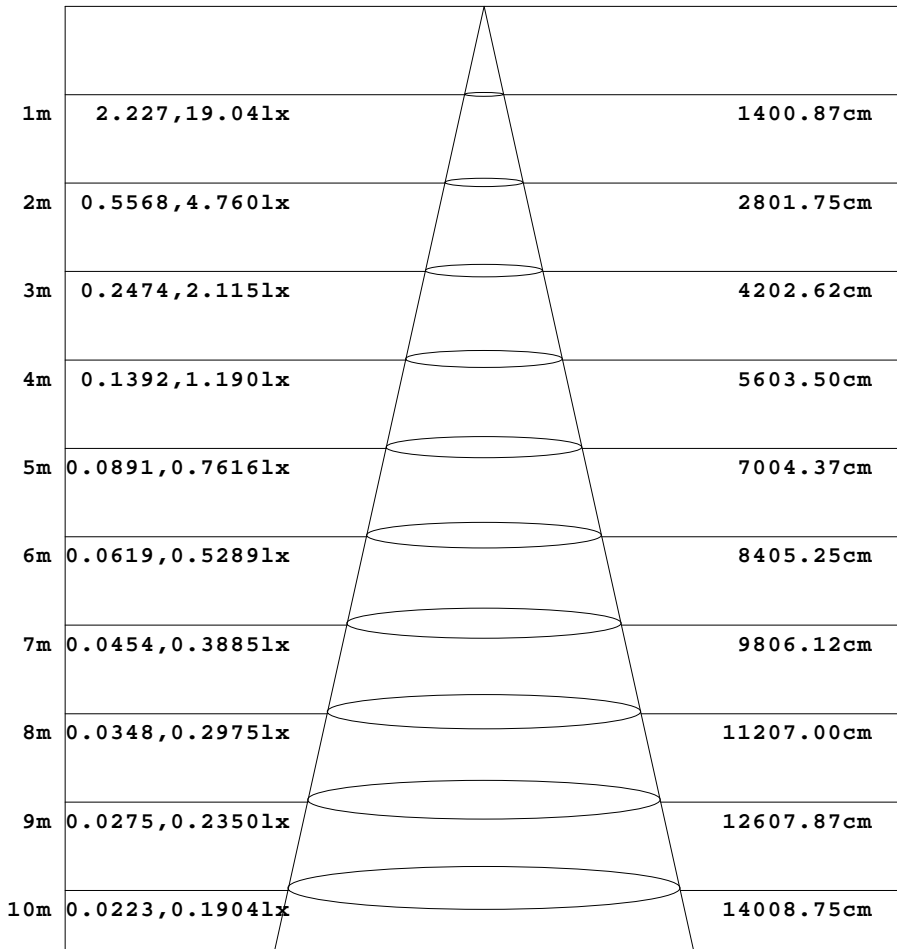
C Range: 0 - 360DEG
 C Interval: 10.0DEG
 Test Speed: HIGH
 Temperature: 25.3DEG
 Operators:
 Test Date: 21 July 2023

g Range: 0 - 180DEG
 g Interval: 1.0DEG
 Test System: EVERFINE GO-2000B_V1 SYSTEM V2.0.400
 Humidity: 65.0%
 Test Distance: 7.110m [K=1.0000]
 Remarks:

AAI Figure

NAME:	TYPE:	WEIGHT:
SPEC.:	DIM.:	SERIAL No.:
MFR.: Ningbo Parker Electric Co.,Ltd	SUR.:	Shielding Angle:

Flux out:354.2 lm



Height Eavg, Emax Angle:163.75deg Diameter

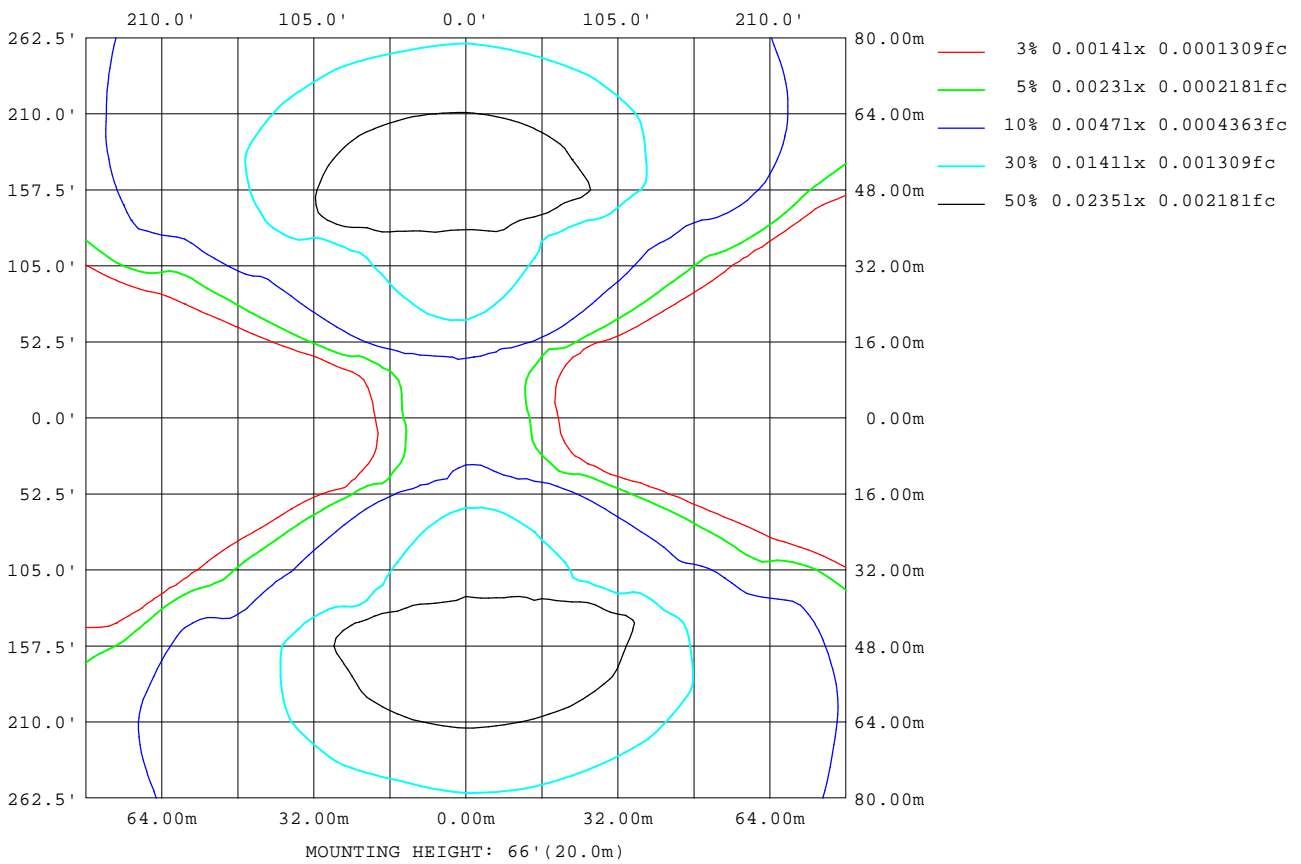
Note:The Curves indicate the illuminated area and the average illumination when the luminaire is at different distance.

C Range: 0 - 360DEG
 C Interval: 10.0DEG
 Test Speed: HIGH
 Temperature:25.3DEG
 Operators:
 Test Date:21 July 2023

g Range: 0 - 180DEG
 g Interval: 1.0DEG
 Test System:EVERFINE GO-2000B_V1 SYSTEM V2.0.400
 Humidity:65.0%
 Test Distance:7.110m [K=1.0000]
 Remarks:

ISOLUX DIAGRAM

NAME:	TYPE:	WEIGHT:
SPEC.:	DIM.:	SERIAL No.:
MFR.: Ningbo Parker Electric Co.,Ltd	SUR.:	Shielding Angle:



C Range: 0 - 360DEG
 C Interval: 10.0DEG
 Test Speed: HIGH
 Temperature: 25.3DEG
 Operators:
 Test Date: 21 July 2023

g Range: 0 - 180DEG
 g Interval: 1.0DEG
 Test System: EVERFINE GO-2000B_V1 SYSTEM V2.0.400
 Humidity: 65.0%
 Test Distance: 7.110m [K=1.0000]
 Remarks:

LED Avg.L Report

NAME:	TYPE:	WEIGHT:
SPEC.:	DIM.:	SERIAL No.:
MFR.: Ningbo Parker Electric Co.,Ltd	SUR.:	Shielding Angle:

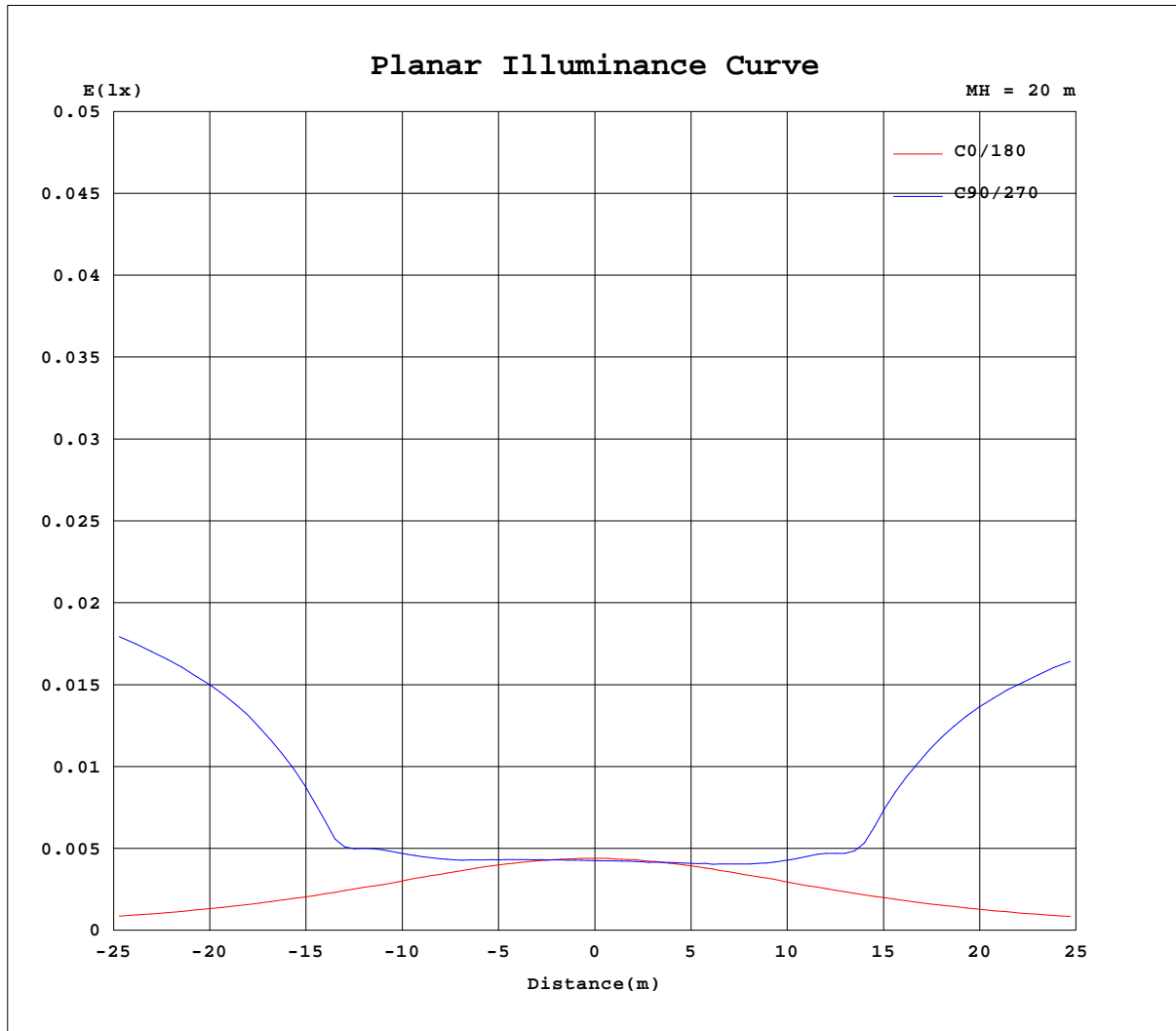
AvgL	cd/m2
L_0~180(65)av	26
L_0~180(75)av	36
L_0~180(85)av	93
L_90~270(65)av	5226
L_90~270(75)av	14551
L_90~270(85)av	35225
L_45(65)av	920
L_45(75)av	8550
L_45(85)av	25673

Standard: GB/T 29293-2012

C Range: 0 - 360DEG
 C Interval: 10.0DEG
 Test Speed: HIGH
 Temperature:25.3DEG
 Operators:
 Test Date:21 July 2023

g Range: 0 - 180DEG
 g Interval: 1.0DEG
 Test System:EVERFINE GO-2000B_V1 SYSTEM V2.0.400
 Humidity:65.0%
 Test Distance:7.110m [K=1.0000]
 Remarks:

Planar Illuminance Curve



C Range: 0 - 360DEG
 C Interval: 10.0DEG
 Test Speed: HIGH
 Temperature: 25.3DEG
 Operators:
 Test Date: 21 July 2023

g Range: 0 - 180DEG
 g Interval: 1.0DEG
 Test System: EVERFINE GO-2000B_V1 SYSTEM V2.0.400
 Humidity: 65.0%
 Test Distance: 7.110m [K=1.0000]
 Remarks:

LUMINOUS DISTRIBUTION INTENSITY DATA

NAME:	TYPE:	WEIGHT:
SPEC.:	DIM.:	SERIAL No.:
MFR.: Ningbo Parker Electric Co.,Ltd	SUR.:	Shielding Angle:

Table--1

UNIT: cd

C(DEG) g (DEG)	0	10	20	30	40	50	60	70	80	90	100	110	120	130	140	150	160	170	180
0	1.72	1.72	1.72	1.72	1.72	1.72	1.72	1.72	1.72	1.72	1.72	1.72	1.72	1.72	1.72	1.72	1.72	1.72	1.72
5	1.71	1.72	1.72	1.72	1.72	1.73	1.72	1.75	1.73	1.75	1.73	1.73	1.72	1.72	1.72	1.72	1.71	1.70	1.71
10	1.71	1.71	1.72	1.75	1.74	1.78	1.78	1.81	1.80	1.82	1.79	1.79	1.76	1.77	1.73	1.72	1.71	1.69	1.69
15	1.71	1.71	1.73	1.77	1.80	1.84	1.84	1.90	1.91	1.93	1.86	1.88	1.82	1.80	1.75	1.73	1.71	1.69	1.68
20	1.68	1.70	1.74	1.80	1.85	1.94	1.98	2.05	2.08	2.09	2.01	2.00	1.91	1.87	1.78	1.75	1.70	1.68	1.65
25	1.67	1.68	1.74	1.85	1.95	2.10	2.23	2.40	2.44	2.47	2.37	2.27	2.10	1.98	1.83	1.76	1.70	1.63	1.63
30	1.63	1.67	1.76	1.91	2.12	2.43	2.73	2.98	3.08	3.09	2.96	2.76	2.45	2.17	1.90	1.78	1.68	1.61	1.59
35	1.59	1.65	1.79	2.05	2.46	3.01	3.30	3.94	4.76	4.88	4.14	3.37	3.05	2.55	2.07	1.82	1.68	1.57	1.54
40	1.55	1.62	1.82	2.31	3.02	3.94	6.85	9.02	10.2	10.3	9.33	7.38	4.58	3.09	2.41	1.90	1.66	1.52	1.49
45	1.48	1.59	1.95	2.77	4.29	8.51	12.4	15.2	16.8	17.0	15.6	13.0	9.35	5.23	2.93	2.09	1.64	1.46	1.43
50	1.40	1.56	2.17	3.35	8.52	14.1	19.5	23.6	26.2	26.4	24.4	20.5	15.4	9.77	4.42	2.45	1.63	1.39	1.36
55	1.31	1.54	2.65	6.65	13.9	22.1	30.7	37.0	41.3	41.6	38.4	32.3	24.4	15.7	8.38	2.96	1.67	1.33	1.27
60	1.21	1.59	3.55	11.2	22.2	35.9	50.2	61.5	67.7	68.4	62.8	53.3	39.5	25.4	13.8	5.39	1.89	1.23	1.18
65	1.12	1.77	6.72	18.8	37.5	61.5	91.5	177	226	242	201	110	66.2	43.0	23.2	9.21	2.29	1.13	1.09
70	1.04	2.15	11.9	34.2	64.6	235	284	306	332	328	312	283	246	120	41.8	16.4	3.64	1.07	1.00
75	0.96	3.64	23.1	99.6	214	318	358	371	373	379	359	363	320	220	150	30.9	6.54	1.04	0.92
80	0.90	6.14	81.5	203	263	355	383	383	375	377	365	369	348	275	214	98.7	12.3	1.03	0.87
85	0.81	17.2	92.1	169	201	259	285	298	305	305	297	286	264	222	178	109	38.3	1.04	0.80
90	0.47	17.0	74.4	140	186	246	277	292	298	299	290	278	252	197	148	82.7	29.7	0.84	0.62
95	0.44	6.67	30.6	53.3	65.1	156	261	281	289	290	279	265	235	166	70.0	25.8	8.49	0.66	0.45
100	0.38	3.29	4.12	1.75	1.32	2.11	4.63	9.80	12.6	13.7	11.2	7.91	3.09	2.31	1.63	3.43	4.52	0.52	0.41
105	0.35	0.36	0.48	0.55	0.78	1.01	1.30	1.51	1.65	1.71	1.64	1.54	1.40	1.19	1.03	0.78	0.62	0.40	0.35
110	0.33	0.32	0.39	0.44	0.60	0.74	0.97	1.15	1.32	1.34	1.33	1.23	1.17	1.00	0.87	0.64	0.50	0.35	0.34
115	0.32	0.31	0.35	0.37	0.49	0.56	0.71	0.81	0.96	0.99	1.03	0.96	0.91	0.79	0.67	0.47	0.41	0.34	0.31
120	0.31	0.30	0.33	0.33	0.40	0.44	0.55	0.62	0.68	0.72	0.74	0.71	0.66	0.56	0.50	0.39	0.38	0.32	0.29
125	0.31	0.29	0.32	0.31	0.36	0.35	0.44	0.44	0.51	0.51	0.55	0.51	0.50	0.43	0.41	0.35	0.35	0.31	0.28
130	0.30	0.29	0.31	0.29	0.33	0.33	0.37	0.36	0.42	0.40	0.45	0.40	0.42	0.36	0.38	0.32	0.34	0.31	0.28
135	0.30	0.29	0.30	0.29	0.31	0.30	0.34	0.33	0.37	0.35	0.38	0.35	0.37	0.34	0.35	0.30	0.33	0.30	0.28
140	0.29	0.29	0.30	0.29	0.30	0.29	0.32	0.30	0.34	0.33	0.36	0.33	0.35	0.32	0.33	0.30	0.33	0.30	0.28
145	0.29	0.29	0.30	0.29	0.29	0.29	0.30	0.29	0.32	0.30	0.33	0.32	0.33	0.30	0.33	0.30	0.32	0.30	0.28
150	0.29	0.29	0.29	0.29	0.29	0.29	0.30	0.29	0.31	0.30	0.32	0.31	0.32	0.30	0.32	0.30	0.32	0.30	0.28
155	0.29	0.29	0.29	0.29	0.29	0.29	0.29	0.29	0.31	0.30	0.32	0.31	0.31	0.30	0.31	0.30	0.31	0.30	0.28
160	0.29	0.29	0.29	0.29	0.29	0.29	0.29	0.29	0.30	0.30	0.31	0.31	0.31	0.30	0.31	0.30	0.31	0.30	0.28
165	0.29	0.29	0.28	0.29	0.29	0.29	0.29	0.29	0.30	0.30	0.31	0.31	0.30	0.30	0.31	0.30	0.31	0.30	0.28
170	0.29	0.29	0.28	0.29	0.29	0.28	0.29	0.29	0.30	0.30	0.31	0.30	0.30	0.30	0.31	0.30	0.31	0.30	0.28
175	0.29	0.29	0.28	0.29	0.29	0.28	0.29	0.29	0.30	0.29	0.31	0.30	0.30	0.30	0.31	0.30	0.31	0.30	0.28
180	0.29	0.29	0.29	0.29	0.29	0.28	0.29	0.29	0.30	0.29	0.30	0.30	0.30	0.30	0.29	0.30	0.30	0.30	0.28

C Range: 0 - 360DEG
 C Interval: 10.0DEG
 Test Speed: HIGH
 Temperature:25.3DEG
 Operators:
 Test Date:21 July 2023

g Range: 0 - 180DEG
 g Interval: 1.0DEG
 Test System:EVERFINE GO-2000B_V1 SYSTEM V2.0.400
 Humidity:65.0%
 Test Distance:7.110m [K=1.0000]
 Remarks:

LUMINOUS DISTRIBUTION INTENSITY DATA

NAME:	TYPE:	WEIGHT:
SPEC.:	DIM.:	SERIAL No.:
MFR.: Ningbo Parker Electric Co.,Ltd	SUR.:	Shielding Angle:

Table--2

UNIT: cd

C(DEG) g (DEG)	190	200	210	220	230	240	250	260	270	280	290	300	310	320	330	340	350		
0	1.72	1.72	1.72	1.72	1.72	1.72	1.72	1.72	1.72	1.72	1.72	1.72	1.72	1.72	1.72	1.72	1.72		
5	1.72	1.72	1.71	1.72	1.71	1.73	1.72	1.74	1.72	1.74	1.72	1.73	1.72	1.72	1.72	1.72	1.72		
10	1.72	1.72	1.72	1.74	1.71	1.76	1.74	1.79	1.75	1.78	1.73	1.76	1.73	1.76	1.72	1.71	1.71		
15	1.71	1.71	1.72	1.76	1.74	1.81	1.80	1.85	1.82	1.85	1.80	1.82	1.77	1.77	1.72	1.70	1.71		
20	1.70	1.71	1.72	1.80	1.80	1.89	1.91	1.99	1.97	1.98	1.91	1.91	1.82	1.80	1.73	1.69	1.69		
25	1.68	1.71	1.74	1.85	1.95	2.07	2.15	2.26	2.25	2.22	2.12	2.04	1.91	1.85	1.73	1.67	1.67		
30	1.66	1.71	1.77	1.97	2.15	2.47	2.69	2.86	2.88	2.77	2.58	2.33	2.06	1.93	1.75	1.67	1.64		
35	1.63	1.71	1.85	2.21	2.66	3.10	3.38	3.78	3.91	3.54	3.16	2.92	2.40	2.06	1.77	1.67	1.60		
40	1.59	1.74	2.02	2.70	3.34	5.70	7.79	8.92	9.12	8.16	6.46	3.88	3.00	2.33	1.84	1.66	1.58		
45	1.55	1.78	2.42	3.43	7.32	10.9	13.7	15.2	15.5	14.2	11.9	8.55	4.72	2.86	2.00	1.64	1.51		
50	1.51	1.94	2.91	7.31	12.6	17.6	21.6	23.9	24.2	22.1	18.9	14.4	9.16	3.98	2.30	1.64	1.44		
55	1.46	2.31	5.74	12.3	19.9	28.0	34.0	37.5	37.7	34.8	29.6	22.5	14.9	7.79	2.83	1.67	1.36		
60	1.46	2.94	9.98	19.7	32.3	45.0	56.2	61.9	63.1	57.5	48.2	36.1	23.9	12.9	5.02	1.84	1.27		
65	1.53	5.76	16.6	33.0	56.9	88.8	148	193	200	150	88.1	62.6	39.3	22.2	8.79	2.24	1.19		
70	1.95	10.3	30.1	79.2	198	268	299	311	317	294	276	234	80.2	39.0	15.8	3.53	1.13		
75	3.18	20.5	97.1	186	301	347	366	368	374	359	348	315	226	135	30.3	6.64	1.08		
80	5.56	69.8	183	248	342	388	399	410	408	398	380	351	271	214	98.8	12.1	1.06		
85	14.8	91.1	173	219	263	292	303	311	309	304	295	282	234	204	118	38.2	1.06		
90	15.3	67.6	134	176	243	274	290	299	299	292	280	254	197	156	90.4	34.0	0.86		
95	4.48	24.3	46.4	63.3	205	261	278	290	289	283	268	176	163	67.9	42.4	17.9	0.68		
100	1.82	4.33	2.30	1.49	2.38	3.08	7.27	10.8	11.5	10.1	5.86	2.25	1.82	1.29	2.27	6.24	0.46		
105	0.53	0.71	0.97	1.16	1.34	1.45	1.59	1.60	1.62	1.53	1.30	1.04	0.82	0.58	0.50	0.40	0.36		
110	0.43	0.56	0.80	0.95	1.13	1.23	1.34	1.34	1.34	1.21	1.02	0.81	0.67	0.51	0.44	0.35	0.35		
115	0.37	0.44	0.61	0.73	0.89	0.96	1.05	1.04	1.00	0.88	0.78	0.62	0.55	0.42	0.38	0.34	0.34		
120	0.34	0.36	0.46	0.55	0.65	0.68	0.75	0.74	0.74	0.65	0.59	0.51	0.43	0.36	0.36	0.32	0.34		
125	0.33	0.34	0.39	0.40	0.48	0.50	0.55	0.52	0.54	0.50	0.46	0.39	0.38	0.34	0.34	0.31	0.33		
130	0.32	0.32	0.35	0.35	0.41	0.40	0.45	0.43	0.43	0.39	0.40	0.34	0.35	0.32	0.34	0.31	0.33		
135	0.31	0.30	0.34	0.34	0.37	0.35	0.39	0.36	0.38	0.34	0.36	0.33	0.34	0.31	0.33	0.31	0.33		
140	0.31	0.29	0.33	0.33	0.35	0.34	0.37	0.34	0.35	0.34	0.34	0.32	0.33	0.31	0.32	0.31	0.32		
145	0.30	0.28	0.32	0.32	0.33	0.32	0.35	0.33	0.34	0.33	0.33	0.31	0.32	0.30	0.32	0.31	0.32		
150	0.30	0.28	0.31	0.30	0.32	0.30	0.33	0.32	0.33	0.33	0.32	0.31	0.31	0.30	0.31	0.31	0.32		
155	0.30	0.28	0.30	0.29	0.31	0.29	0.33	0.30	0.32	0.31	0.31	0.31	0.31	0.30	0.31	0.31	0.32		
160	0.30	0.28	0.30	0.29	0.30	0.29	0.32	0.30	0.31	0.30	0.31	0.31	0.30	0.30	0.31	0.31	0.32		
165	0.29	0.28	0.29	0.29	0.30	0.29	0.31	0.30	0.30	0.30	0.30	0.30	0.30	0.30	0.31	0.31	0.31		
170	0.29	0.28	0.29	0.29	0.30	0.29	0.30	0.30	0.30	0.30	0.30	0.30	0.30	0.30	0.31	0.31	0.31		
175	0.29	0.28	0.29	0.29	0.29	0.29	0.30	0.30	0.30	0.29	0.29	0.30	0.30	0.30	0.31	0.31	0.31		
180	0.28	0.28	0.29	0.29	0.29	0.29	0.29	0.30	0.29	0.29	0.30	0.30	0.30	0.30	0.31	0.31	0.30		

C Range: 0 - 360DEG
 C Interval: 10.0DEG
 Test Speed: HIGH
 Temperature:25.3DEG
 Operators:
 Test Date:21 July 2023

g Range: 0 - 180DEG
 g Interval: 1.0DEG
 Test System:EVERFINE GO-2000B_V1 SYSTEM V2.0.400
 Humidity:65.0%
 Test Distance:7.110m [K=1.0000]
 Remarks: